



Dear team,

I am pleased to be the Acting Executive Director TPCCH for the next four weeks while Tami Photinos takes some well-deserved leave. I will be sharing the responsibilities of the Executive Director role with Geoff Grima who will undertake the position from 25 November to 22 December 2024.

A sincere thanks to the great TPCCH team for your involvement in our recent TPCCH Charlies Week celebrations. This was my very first Charlies Week and it was excellent to see everyone getting into the spirit of the week. Everyone certainly had a lot of fun!

Our GEM team continued the festivities this week with a special celebration for Diwali. Diwali is a Hindu festival which symbolises the spiritual victory of light over darkness and good over evil. The Indian festival is considered a bonding period for families and communities to cultivate a spirit of togetherness and festivity. Members of our GEM team celebrated the occasion by bringing in some traditional food for their colleagues to share in and enjoy. A wonderful display of generosity and culture. Happy Diwali week everybody!



*GEM Unit Diwali celebrations*

## **Executive update**

Yesterday I visited the Psychology Department in acknowledgement of Psychology Week, which this year focuses on the intersection of psychology and environmental issues. It was great to chat with members of the team to learn about the services and models of care they provide to patients here at TPCCH. The Psychology team consists of 22 psychologists who provide evidence-based therapies for a wide range of psychological concerns across both inpatient and outpatient settings. The service offers adult and paediatric neuropsychology assessment clinics which provide

comprehensive neurocognitive, neurodevelopmental and differential-diagnosis assessments in areas such as dementia, post-stroke, ADHD, ASD and many other cognitive concerns. Last financial year, the team provided 3,200 outpatient sessions, and psychological care to more than 350 individual patients. There is definitely some innovative work being done by this team!



*Psychology team visit*

### **Expression of Interest - TPCH Staff Council Chair**

Expressions of interest are sought from enthusiastic staff to nominate for the position as Chair on The Prince Charles Hospital Staff Council. This is a unique opportunity to be a voice, to advocate for staff and ignite engagement on issues of importance for both clinicians and patients as well as on quality and safety.

TPCH Staff Council plays a key role in representing clinicians. All staff involved in patient care who hold a position at The Prince Charles Hospital are eligible to apply.

[More information on how to apply.](#)

### **Grand Rounds**

Yesterday's Grand Rounds session received some great feedback. The session titled 'The Impact of Unprofessional Behaviour on Staff Wellbeing and Patient Safety' was delivered by RBWH Wellbeing Specialist, Dr Liz Crowe whose presentation resonated with many staff.

For those staff who were unable to attend the session, I encourage you to view it on [TPCH Grand Rounds QHEPS page](#).

## **Infrastructure update**

### **TPCH Expansion Project update**

As early works for construction of the new Acute Services Building continue, site investigations and vegetation removal activities are progressing well. Building 50 (the new modular accommodation building for staff decanting out of Building 14) has taken shape over the last couple of weeks, with 18 modular buildings delivered to site during October. The builders have been progressing with service connections and fit-out activities, and the project team has been working with staff from Building 14 to ensure everyone is starting to get organised and prepare for the move later this year.

Work is also progressing to relocate the BEMS Building main entry and contractor parking to the rear of the building. These works are required to enable the construction of a new entry and exit road, providing safe vehicle access to the new Acute Services Building, which will house our new and expanded adult and paediatric emergency departments. As part of the changes to the BEMS Building, the electrician's workshop will be relocated into Medical Records storage (Building 16), with construction due to commence in mid-November. With all the changes to pedestrian and vehicle access around Building 16 and the loading dock, it is important for everyone's safety that you follow all directional signage and advice from traffic controllers and stay safe by walking on

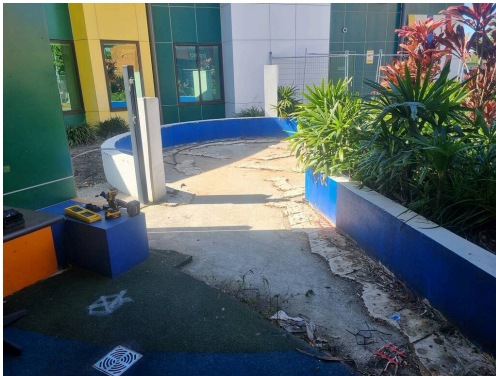


pedestrian footpaths and using designated crossings.

It's a busy time for our hospital, and the significant changes to our campus due to construction activities can start to feel tiring, but we will continue to work with the project team to ensure construction impacts are minimised and safe solutions are in place. We all have a role to play in ensuring our patients are supported throughout this journey and that we continue living the Metro North values.

### ***ED courtyard***

TPCH now has a newly upgraded Emergency Department courtyard area. This area has been many months in the making with the support of our BEMS team, to create a pleasant outdoor recreation space for patients and visitors. A shade sail is scheduled to be installed in the coming weeks. What a great addition to our busy ED, well done!



*ED courtyard before*



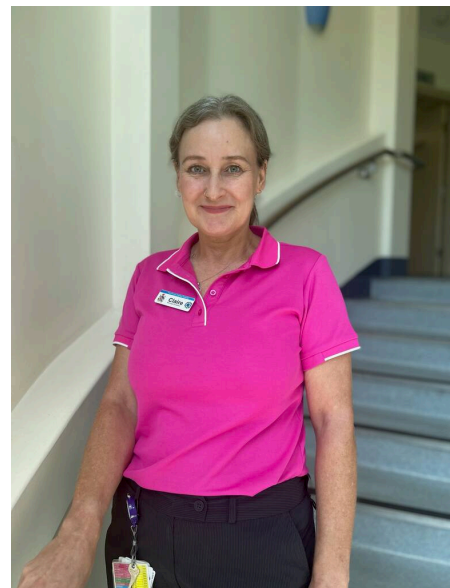
*ED courtyard after*

### **Staff profile**

Today we'll profile Breast Care Clinical Nurse, Claire Young. Claire sees patients ranging from those with benign breast disease and first diagnosis of breast cancer to those preparing for and recovering from surgery and during ongoing treatment.

She runs three nurse-led clinics each week, and visits patients on the ward after their surgery to offer support, education, information and counselling, as well as referrals to support services within the hospital and community.

Having established the role in November 2020, Claire finds great reward in being able to competently support patients through their journey, providing reassurance and open communication. She is passionate about advocating for her patients to allow them to receive the best possible care with the support and respect of her team.



Outside of work, Claire spends most of her spare time renovating her new house. She loves being with her family and pup, and enjoys going to the theatre and cinema.

### **Shout out**

This week's shout out goes to Kim Gourlay, Simulation Coordinator for his commendable participation on the expert panel for the CSDS's 20-year celebration of education and simulation.

Kim was a great hit with the audience, presenting with confidence

and ease, and providing many examples of how TPCH uses simulation as an education tool. Thank you Kim, you're a great advocate and asset to TPCH.

Kim also coordinated our first ever TPCH Week CPR Challenge which was a big hit among TPCH staff. Well done!



The other shout goes to the Kallangur Satellite Hospital (KSH) team who held a special pink ribbon morning tea in support of Breast Cancer Awareness month. 'Pink Pandemonium Dress Up' was the requirement of the day with Johanna Haines winning the best dressed. There was great engagement from all services at KSH not to mention an amazing selection of pink food! A big thanks to Trina Scott and the KSH Wellbeing and Social club for organising this colourful event.



Kind regards,

**Dr Julieanne Graham**  
Acting Executive Director  
The Prince Charles Hospital

We respectfully acknowledge the Traditional Owners and Custodians of the land on which our facilities are built. We also pay respect and acknowledge Elders past, present and the future.



Double click here to add content