



Summary:

- Redcliffe Hospital Expansion Project Roadmap

Message feedback



Audience: Redcliffe Hospital staff



Read time: 1 min



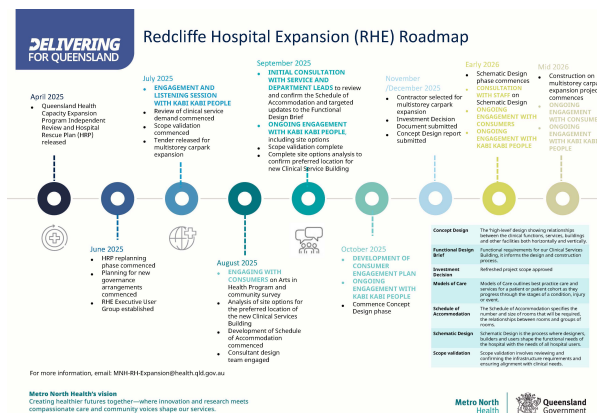
For: Information

Dear colleagues

I'm pleased to share with everyone the first Redcliffe Hospital Expansion Project Roadmap.

The Roadmap details what to expect over the next six months of the Redcliffe Hospital Expansion (RHE) project, including key milestones, project deliverables and goals.

[I invite everyone to read the Roadmap.](#)



Building a new hospital is a complex process involving three key phases – planning, design and delivery. Right now, we are in the planning stage, about to commence a major consultation process with service lines and departmental leads.

This consultation will run throughout September, involving a small group of clinicians who will assist in refining and finalising the Schedule of Accommodation and updating targeted models in the Functional Design Brief.

This will be a meaningful consultation process, balancing tight timeframes to allow us to meet our deadline of the Investment Decision Document by the end of the year.

While this initial round of consultation activity will involve a smaller group, be assured there will be more opportunities for broader staff consultation as we move into the design phase.

We are also planning a Special Staff Forum in coming weeks to provide staff an opportunity to ask questions and learn more about our once-in-a-lifetime expansion project.

I strongly encourage everyone to take a look at the RHE Roadmap, and If you have any questions, please email the [Redcliffe Hospital Expansion team](#).

Kind Regards

Cang Dang
Executive Director,
Redcliffe Hospital

Metro North Health



We uphold our commitment to health equity through our Values in Action
Respect | Integrity | Compassion | High Performance | Teamwork



Metro North Health acknowledges the Traditional Custodians of the Land upon which we live, work and walk, and pay our respects to Elders both past and present.

Metro North Health's vision

Creating healthier futures together—where
innovation and research meets compassionate
care and community voices shape our services.



**Queensland
Government**

[If you have no longer work for Redcliffe Hospital - click here to request to be removed from the mailing list.](#)