

ANNUAL REPORT

2015–2016

Metro North Hospital and Health Service



Queensland
Government

ISSN: 2202-6258

© Metro North Hospital and Health Service 2016

Metro North Hospital and Health Service Annual Report 2015–16 by the Metro North Hospital and Health Service is licensed under a Creative Commons Attribution 3.0 Australia licence. In essence, you are free to copy, communicate and adapt this Annual Report as long as you attribute the work to the Metro North Hospital and Health Service.



To view the terms of this licence, visit:
<http://creativecommons.org/licenses/by/3.0/au>.
For permissions beyond the scope of this licence,
contact qgcio@qld.gov.au.

To attribute this material, cite the Metro North Hospital and Health Service Annual Report 2015–16.

ACCESSIBILITY

Public Availability

Where possible, readers are encouraged to download the report online at:
www.health.qld.gov.au/metronorth

Where this is not possible, printed copies are available using one of the contact options below:

Physical Address: Level 14, Block 7, RBWH Campus HERSTON Qld 4029
Postal Address: PO Box 150, RBWH Post Office, HERSTON Qld 4029
General Phone: 07 3646 8111
General Fax: 07 3647 9708
Office Hours: 9.00am to 5.00pm, Monday to Friday
General E-mail: MD16-MetroNorthHHS@health.qld.gov.au

Interpreter Services Statement



Metro North Hospital and Health Service is committed to providing accessible services to the community from culturally and linguistically diverse backgrounds.

If you have difficulty in understanding the annual report, please contact us on 07 3646 8111 and we will arrange an interpreter to communicate the report to you effectively.

Information Security

This document has been security classified using the Queensland Government Information Security Classification Framework (QGISCF) as UNCLASSIFIED – FINAL VERSION and will be managed according to the requirements of the QGISCF.

LETTER OF COMPLIANCE



Metro North
Hospital and Health Service

6 September 2016

The Honourable Cameron Dick MP
Minister for Health and
Minister for Ambulance Services
GPO Box 48
BRISBANE QLD 4001

Dear Minister

I am pleased to submit for presentation to the Parliament the Annual Report 2015-16 and Financial Statements for Metro North Hospital and Health Service.

I certify that this Annual Report complies with:

- The prescribed requirements of the Financial Accountability Act 2009 and the Financial and Performance Management Standard 2009, and
- The detailed requirements set out in the Annual Report requirements for Queensland Government agencies.

A checklist outlining the annual reporting requirements can be found on page 100 of this annual report.

Yours sincerely

A handwritten signature in black ink, appearing to read "Rob Stable".

Dr Robert Stable AM
Chair
Metro North Hospital and Health Board

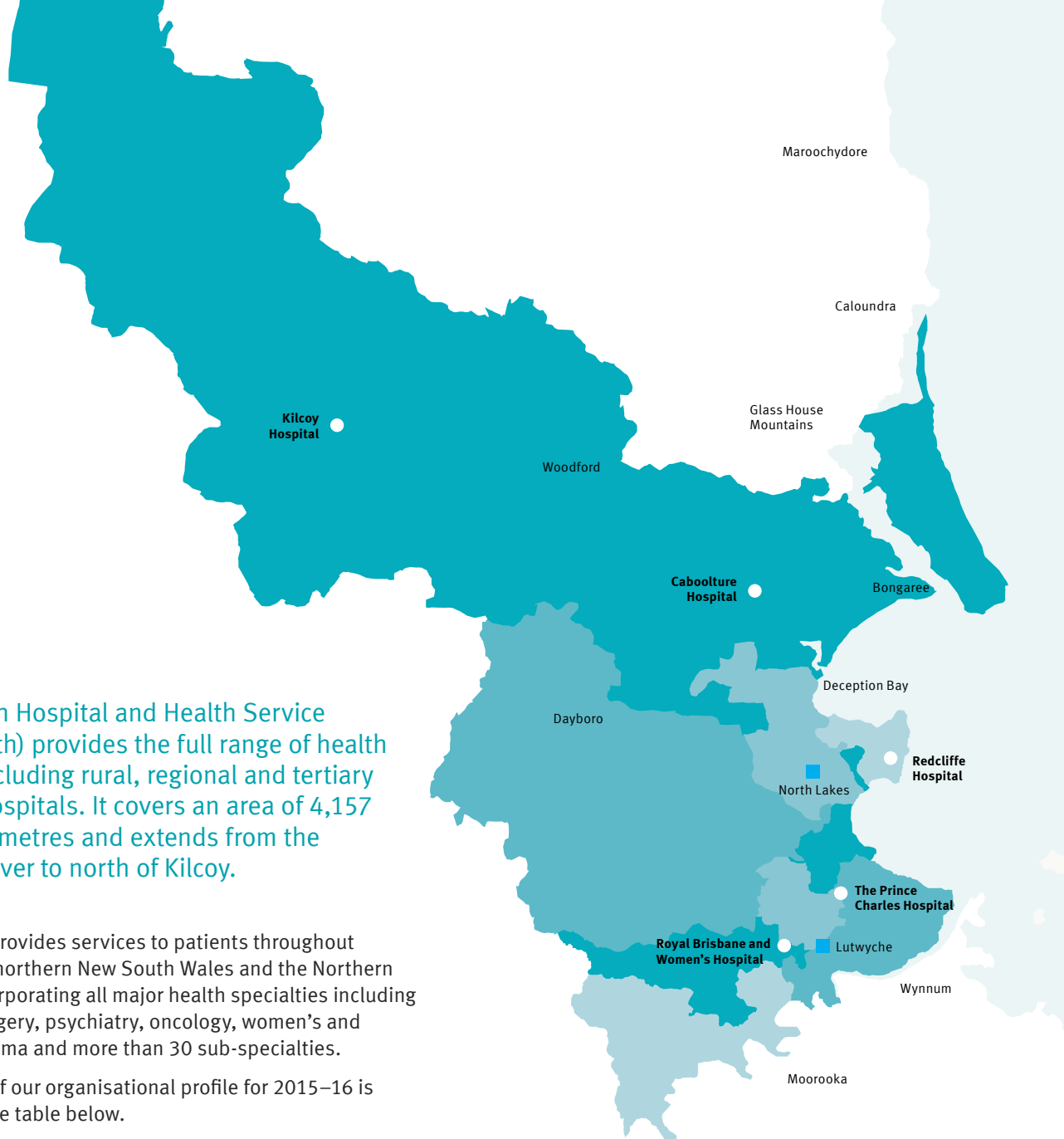
Office of the Metro North Hospital and Health Board
Level 14, Block 7
Royal Brisbane and Women's Hospital
Herston, Queensland 4029 Australia

Telephone +61 7 3647 9702
Email metro_north_board@health.qld.gov.au
www.health.qld.gov.au/metronorth

TABLE OF CONTENTS

	Accessibility	2
	Public Availability	2
	Interpreter Services Statement	2
	Information Security	2
	Letter of Compliance	3
	Metro North Hospital and Health Service Profile	6
	2015 – 2016 Fast facts	7
1.0	General Information	8
1.1	Message from the Board Chair and Chief Executive	8
1.2	Role of Metro North Hospital and Health Service (Metro North)	10
2.0	Non-Financial Performance	16
2.1	Government objectives for the community	16
2.2	Other whole-of-government plans / specific initiatives	18
2.3	Agency objectives and strategic priorities (Metro North)	18
2.4	Agency service areas, service standards and other measures	22
2.5	Non-financial performance: An overview	28
3.0	Financial Performance	30
3.1	Summary of financial performance	30
4.0	Governance – Management and Structure	31
4.1	Organisational structure	31
4.2	The Board	35
4.3	Executive management	39
4.4	Public Sector Ethics Act 1994	43
4.5	Queensland Public Sector Values	43

5.0	Governance – Risk Management and Accountability	44
5.1	Risk management and audit	44
5.2	External scrutiny	48
5.3	Internal Audit	49
5.4	Information systems and record keeping	49
5.5	Patient Safety and Quality of Care	51
6.0	Governance – Human Resources	52
6.1	Workforce planning, attraction and retention and performance	52
6.2	Early retirement, redundancy and retrenchment	56
7.0	Financial Statements 2015–16	59
7.1	General information	59
7.2	Certification of the Metro North Hospital and Health Service	94
7.3	Independent Auditor’s Report	95
	Appendix 1: Glossary	98
	Appendix 2: Board Member meeting attendance	99
	Appendix 3: Compliance checklist	100

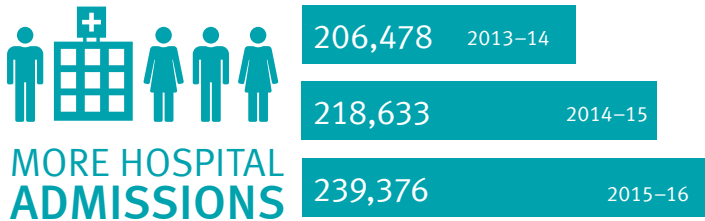
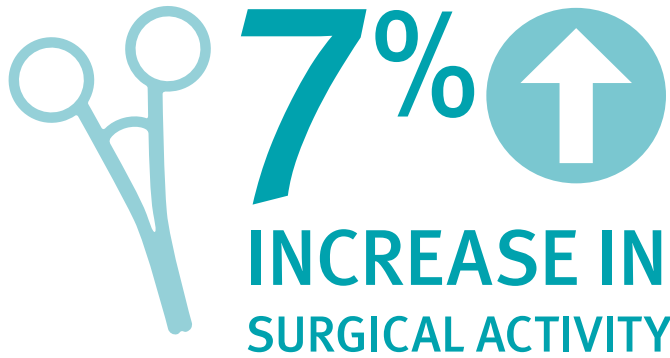


Metro North Hospital and Health Service (Metro North) provides the full range of health services including rural, regional and tertiary teaching hospitals. It covers an area of 4,157 square kilometres and extends from the Brisbane River to north of Kilcoy.

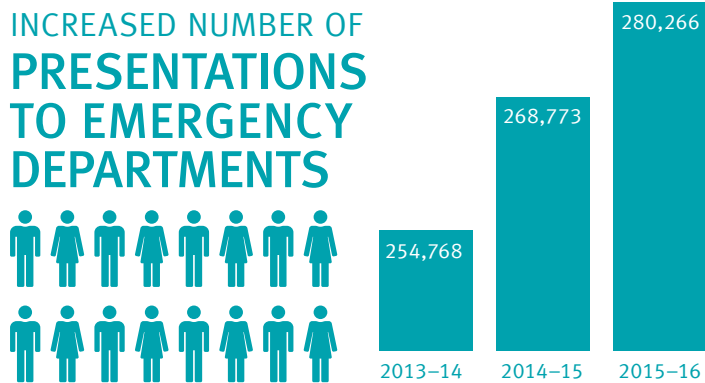
Metro North provides services to patients throughout Queensland, northern New South Wales and the Northern Territory, incorporating all major health specialties including medicine, surgery, psychiatry, oncology, women’s and newborn, trauma and more than 30 sub-specialties.

An overview of our organisational profile for 2015–16 is provided in the table below.

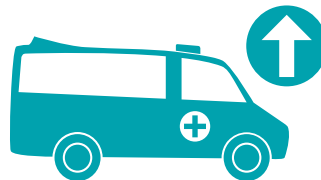
Staff	14,478 (MOHRI FTE)
Investment in care	\$2.458 billion
Sites	5 hospitals with 2,276 available beds, 14 community, Indigenous and subacute service locations, 27 oral health facilities and 12 mental health facilities
Hospital admissions	239,376 people admitted
Ambulance arrivals	94,824 ambulance arrivals handled by our emergency departments
Emergency	280,266 attendances
Outpatient services	891,969 people received care as outpatients
Surgical operations	46,187 elective and emergency operations performed
Children	15,785 children under age 18 were admitted to Metro North wards and units
Births	8,061 babies born at our facilities
Mental health	411,333 contacts
Community health	302,537 hours of direct primary care
X-ray and ultrasound	304,251 x-ray and ultrasound attendances
Dental	748,936 weighted occasions of service
Breastscreens	43,019 breastscreens performed



INCLUDING AN **8.7% INCREASE IN EMERGENCY ADMISSIONS**



INCREASE IN AMBULANCE ARRIVALS



REDUCTION IN LONG WAITS ENT OUTPATIENTS (1,447 PATIENTS) SINCE JUNE 2015



196,363 **ADMITTED OR TREATED AND DISCHARGED IN 4 HOURS***

People admitted or treated and discharged within four hours of presentation to a Metro North ED



** Excludes manually collected Kilcoy data.*

ZERO LONG WAIT DENTAL LISTS

