

Metro North

Hospital and Health Service

snapshot

Putting people first

Our promise is to put people first. Metro North Hospital and Health Service enables people to deliver excellent patient-centred care and high quality health services. With a focus on collaboration with healthcare partners and an investment in systems, engagement and culture, we connect people to deliver services to a population approaching 900,000, from north of the Brisbane River to north of Kilcoy.

Metro North Hospital and Health Service is the biggest and most diverse HHS delivering the best care by the brightest health care professionals.

Our diversity is unique. Two of our five hospitals – Royal Brisbane and Women’s Hospital (RBWH) and The Prince Charles Hospital (TPCH) – are tertiary/quaternary referral hospitals, providing state-wide super specialty services, such as heart and lung transplantation and burns treatment. Redcliffe and Caboolture are major secondary hospitals, and Kilcoy is a regional community hospital.

Our core pillars

We have a strong focus on, and commitment to, service delivery and education and training. In particular, our focus on excellence ensures a thriving culture of research that delivers continuous service improvement and evidence-based care.



Our service delivery. Metro North Hospital and Health Service delivers connected care to local communities and provides specialty services for patients throughout Queensland, northern New South Wales and the Northern Territory. Our Clinical services incorporate all major health specialties, including medicine, surgery, psychiatry, oncology, women's and newborn, trauma and more than 30 sub-specialties.



RBWH is the largest tertiary referral hospital in Queensland with a number of specialties including medicine, surgery, orthopaedics, psychiatry, oncology, trauma and women's and newborn services. RBWH fulfils a significant teaching and research role with links to Queensland's major tertiary institutions.



TPCH is the major tertiary level cardiothoracic referral hospital for Queensland, the largest such unit in Australia, and one of the largest services of its type in the world. The hospital also provides emergency, general medical and surgical services, orthopaedics, and rehabilitation services, as well as outreach specialist services throughout Queensland.



Redcliffe and Caboolture Hospitals are key facilities servicing fast-growing populations. Services include emergency, medical, surgical, orthopaedics, obstetrics, paediatrics, rehabilitation, and specialised outpatient clinics. Kilcoy is a rural hospital providing emergency, general medicine, and postnatal care.



Mental Health, Oral Health, Subacute and Ambulatory Care services are provided from many sites including hospitals, community health centres, residential, rehabilitation and extended care facilities, including the Brighton Health Campus, and mobile service teams. Dedicated units provide public health and Aboriginal and Torres Strait Islander health services. The state-wide Clinical Skills Development Centre is one of the world's largest providers of healthcare simulation.



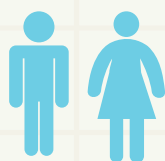
A yearly glance



2.1 million episodes of care provided across our services



250,000 Emergency Department presentations



200,000 admissions to hospital



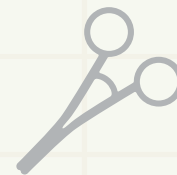
8,000 births per year
 { that's one baby born each hour }



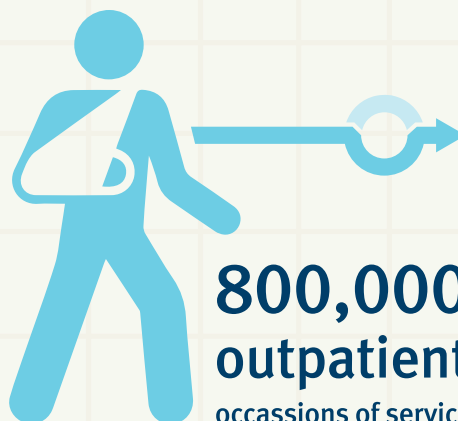
employs more than **16,000** people



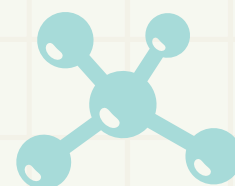
largest HHS employer of nurses in Queensland
7,300
 { 46% of our workforce }



more than **36,000** surgical operations

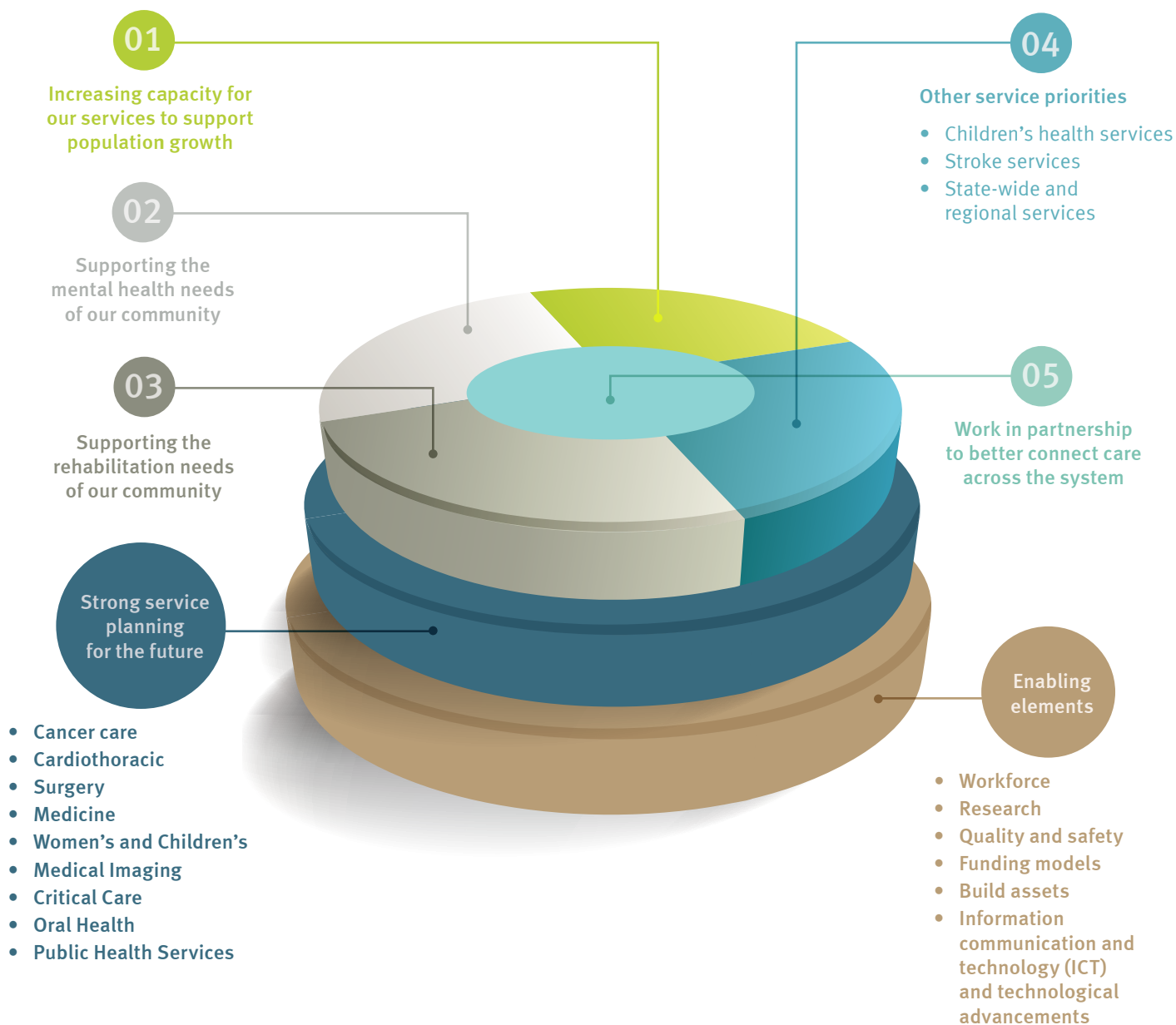


800,000 outpatient occasions of service




Herston offers unique position co-located with leading researchers


Planning for our future. The Metro North Hospital and Health Service *Health Service Strategy 2015-2020* has been developed in consultation with our clinicians, staff, community and health care partners. The strategy has a five-year outlook and identifies five priority areas to respond to our challenges and improve outcomes for our patients, their carers and families. These include (1) increasing service capacity to support population growth; (2) mental health; (3) rehabilitation; (4) other, including children's health services and state-wide and regional stroke services; and (5) services working in partnership to better connect care.





Get in touch


Metro North Hospital and Health Service
Level 14, Block 7
Butterfield Street
Herston, Qld, 4029
AUSTRALIA

 07 3646 8111

 md16-metronorthsd@health.qld.gov.au

 www.health.qld.gov.au/metronorth

 facebook.com/MetroNorthHHS

 twitter.com/@MetroNorthHHS

 Metro North Hospital and Health Service



View the latest Metro North Hospital and Health Service publications, including the Annual Report, Quality of Care Report and Health Service Strategy 2015-20
www.health.qld.gov.au/metronorth/publications