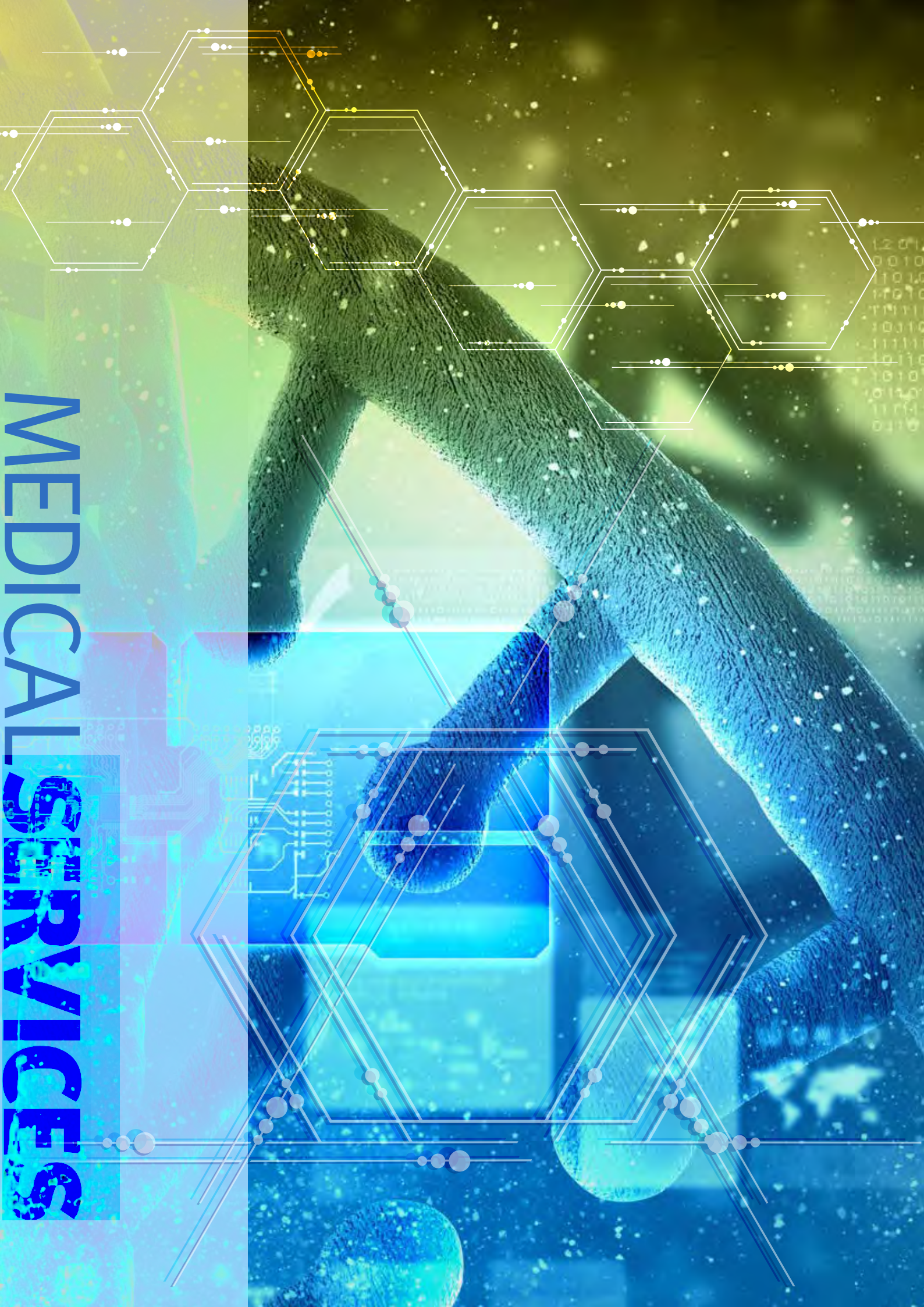


MEDICAL SERVICES



MEDICAL SERVICES



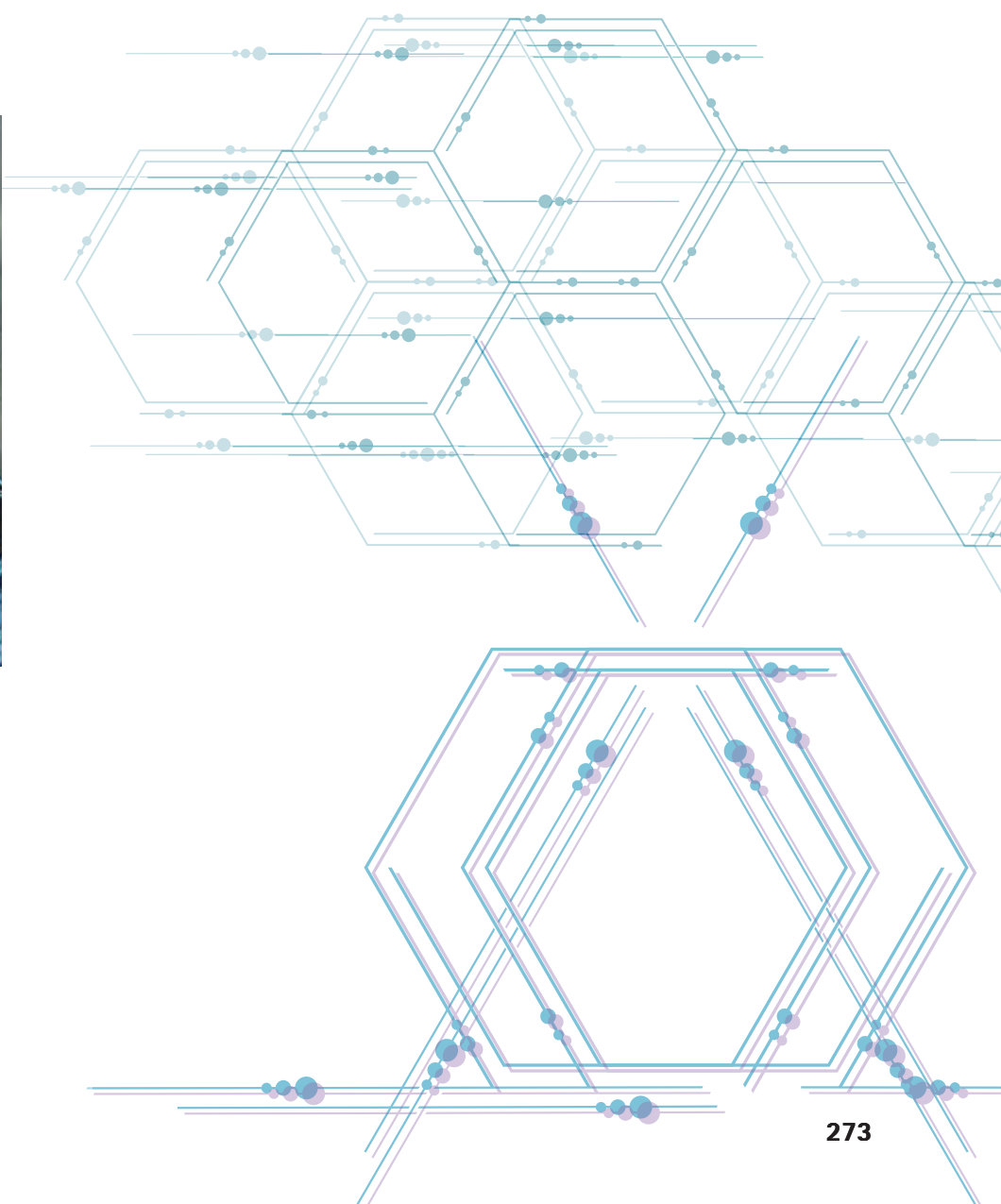
Judy Graves
Executive Director
Medical Services

Medical Services provides support to all areas of the Royal Brisbane and Women’s Hospital in all aspects of medical administration and encompasses several departments that contribute to invaluable research activities for the organisation.

The role of the Quality, Innovation, Patient Safety and Support Services, which is part of Medical Services, is to lead the patient safety, quality and clinical improvement agendas for the Royal Brisbane and Women’s Hospital. This is achieved through an integrated approach in meeting the organisation’s clinical governance agenda. This service provides expertise and support to the Service Lines through safety partnerships to ensure the delivery of safe, high quality services. Ensuring the engagement of patients, families, carers and all consumers in the design, effective delivery and evaluation of our services is a role of the service, as is the drive for continuous improvement and organisational learning.



Danielle Heffernan
Nursing Director
Quality, Innovation and
Patient Safety Service



QUALITY INNOVATION & PATIENT SAFETY SERVICES (QIPSS)

RBWH Research Staff with research roles, positions or appointments: e.g. Coordinators, Fellow, Adjunct and Honorary appointments

Name <i>(RBWH Staff in bold)</i>	Type of Position	Research Program	Affiliated University/ies
Tara McCurdie	Honorary Research Fellow		The University of Queensland

Research Grants

Investigators <i>(RBWH staff in bold)</i>	RBWH Research Groups /Departments	Project Title	Granting Body	Total of funds awarded	Funds used in 2019	Years
Adrienne Young, Angela Byrnes, Alison Mudge, Prue McRae, Mark Brough, Gary Power, Amanda Dines, Merrilyn Banks, Tara McCurdie	Nutrition and Dietetics, Internal Medicine Research Unit, RBWH Consumer Advisory Group, Quality Innovation and Patient Safety Service	Co-designing a positive meal environment for older people in hospital: a multi-phase experience-based co-design study	RBWH Project Grant	\$35,459	\$35,459	2019

2019 Research Publications

Journal Articles

- Sanderson P, **McCurdie T**, Grundgeiger T. Interruptions in health care: Assessing their connection with error and patient harm. *Human Factors*. 2019 Aug 30;61(7):1025-1036
- Santomauro C, **McCurdie T**, Pollard C, Shuker M. Exploring the feasibility of wearable technologies to provide interactive telepresence sub-specialist support to remote clinicians treating patients with traumatic injuries. *Prehospital and Disaster Medicine*. 2019;34(s1) s85.

Other communications and outputs:

- Santomauro, C., **McCurdie, T.**, Pollard, C., & Shuker, M. Exploring the feasibility of wearable technologies to provide interactive telepresence sub-specialist support to remote clinicians treating patients with traumatic injuries. WADEM (World Association for Disaster and Emergency Medicine) Congress on Disaster and Emergency Medicine. May 2019
- Santomauro, C., Shuker, M., **McCurdie, T.**, Pollard, C., & Host, D. Using Simulation to Explore the Feasibility of Wearable Interactive Telepresence Technology to Support Remote Clinicians Treating Patients with Traumatic Injuries. Australasian Simulation Congress. September 2019
- Ryan, C.**, Daelman, T., Daly, N. RBWH SPIRIT Program presented at the Health Round Table Developing a Health Culture Group. Melbourne; October 2019. Awarded Certificate of Achievement for presenting an outstanding Innovation
- Tyler, J., Coates, H., **Babao, E.** Wrong Blood in tube: A Women's and Newborn Trial presented at the Health Round Table Patient Safety Improvement Group. Melbourne; October 2019.