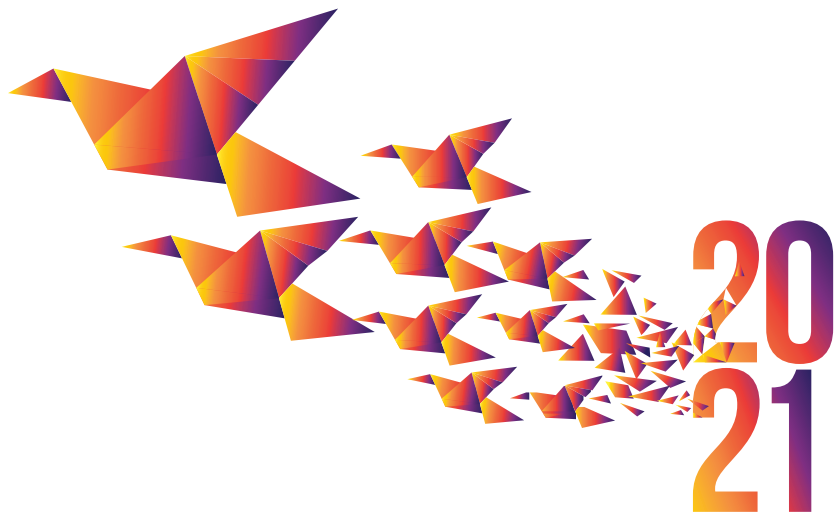


FREE EVENT



## 5th Annual CANCER PRECEPTORSHIP FOR GENERAL PRACTITIONERS

SATURDAY 24 JULY

# WE'RE BACK!

## THE LATEST IN ONCOLOGY EDUCATION

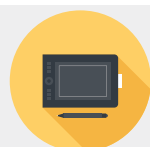
**The platform will open at 8.30am for a 9.00am start the program will conclude at 1.00pm.**

RBWH is the largest Cancer Care service in Queensland. Our experienced doctors provide world class treatment & clinical trials, backed by a team of nurses and allied health to deliver patient centred social emotional and supportive care. Outstanding care - That's just what we do.

Associate Professor Melissa Eastgate together with esteemed colleagues invite you to attend the cancer preceptorship GP education day. The program overleaf outlines plenary speakers, workstations and radiation oncology unit tour.

We want to partner with you to provide GREAT care, to your patients, at one of their toughest times.

**This activity is pending RACGP approval for 40 CPD accredited activity points.**



## VIRTUAL EVENT

The 2021 Cancer Preceptorship for General Practitioners **FREE** Education session will be held as a virtual event with exclusive access to education content up to 12-months. (access will be supplied a few days prior to the event)

## REGISTER NOW

<https://www.trybooking.com/BJOOR>

Registration will remain open through to Friday 17 July 2021

Online registrations are processed securely and confirmed immediately by email.

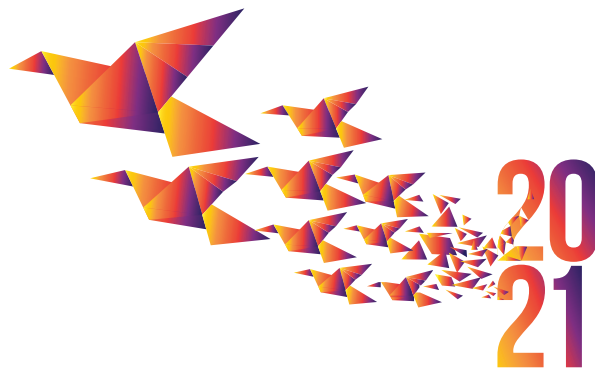
*“Excellent teaching day, all GP’s should rotate through the program”*

*“Workshop was excellent and drastically improved my knowledge about the application of radiation oncology”*

*“Variety of topics, relevant to GP practice”*

**For more information about this event contact:**

Elaine Chilcott E: [Med\\_Onc\\_Secretary@health.qld.gov.au](mailto:Med_Onc_Secretary@health.qld.gov.au) P: (07) 3646 7983



# 5th Annual CANCER PRECEPTORSHIP FOR GENERAL PRACTITIONERS

PROGRAM		SATURDAY 24 JULY
9:00-9:15am	Welcome to Royal Brisbane and Women's Hospital - Cancer Care Services	<b>Associate Professor Glen Kennedy</b> Executive Director, RBWH Cancer Care Services
<b>ROTATING BREAKOUT ROOMS 30 MINUTES PER TOPIC</b>		
9:15:am	Iron Infusions – indications/guidelines	<b>Dr Michelle Spanevello</b>
	Referral Pathways	<b>Associate Professor Glen Kennedy</b>
	What vaccinations and when?	<b>Dr Cameron Curley</b>
	COVID/Other	<b>Associate Professor Melissa Eastgate</b>
	Melanoma – treatment update	<b>Associate Professor Melissa Eastgate   Associate Professor David Wyld</b>
	15 minute overview	
	15 minute case studies	
	Bone Metastases – treatment and complications	<b>Associate Professor Benjamin Chua</b>
	15 minute overview	
	15 minute case studies	
<b>11:15-11.30am BREAK</b>		
<b>LARGE GROUP SESSIONS</b>		
11:30am	Mock MDT – Prostate Cancer Medical Oncology	<b>Associate Professor Melissa Eastgate</b>
	Medical Oncology	<b>Dr Anna Kuchel</b>
	Radiation Oncology	<b>Dr Michelle Grogan</b>
	Cancer Care Coordinator	<b>Amy Gibson</b>
	Who gets discussed?   How are they referred?   Treatment options	
12-12:30pm	Survivorship for cancer patients – acceptance and commitment therapy	Invited Speaker: <b>Professor Jane Turner</b>
12:30-13:00pm	Panel Questions and Answers	All Speakers

This program is subject to change