



OUR GREEN INITIATIVES



Metro North Health is working toward making our health service greener and cleaner for our staff, our patients and our communities.

We want to be the sustainability leader for the health industry.

By reducing our environmental footprint and making our hospitals greener we can contribute to a brighter future for a healthier and more sustainable tomorrow. We are taking positive steps to enhance energy efficiency and to reduce waste. We are putting a range of actions for sustainable change into play across our six green initiative areas and will be supported by implementation plans to take action now.

100% ELECTRIC HOSPITAL BY 2035



50% RENEWABLE ENERGY BY 2030

70% RENEWABLE ENERGY BY 2032

80% RENEWABLE ENERGY BY 2035

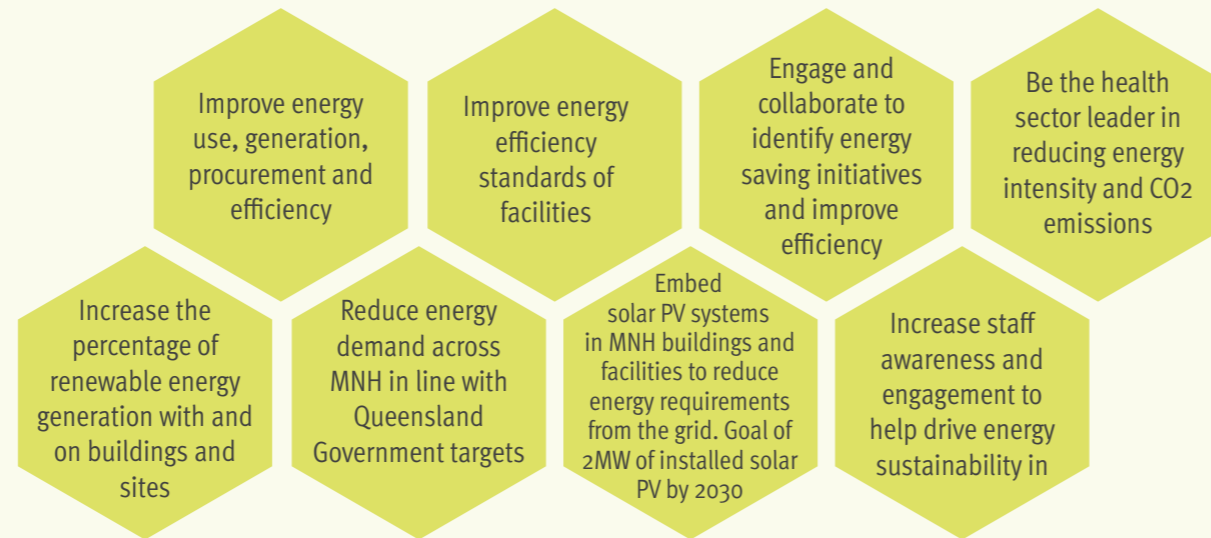
ZERO NET EMISSIONS BY 2050



OUR OBJECTIVES

We are investing in a more sustainable energy future and to reduce our energy consumption and CO₂ emissions through targeted energy management, generation and sustainability initiatives.

Our Energy Implementation Plan aims to improve energy use and transition to renewable energy across Metro North Health and to also improve energy efficiency standards of our facilities.



WE WANT TO



Eliminate steam as a low efficiency energy source

Rate key buildings against NABERS for key buildings



Measure energy use per bed per day

Use QH's Environmental Sustainable Performance Indicators (ESPI) as a reporting tool





	WHAT WE ARE DOING	STATUS	OUTCOME
1	Earth Hour annual event to demonstrate support for the global effort for climate change	Annually	<ul style="list-style-type: none"> Increase staff awareness to conserve energy.
2	Switch Off campaign to encourage energy conservation in the workplace	Progressing	<ul style="list-style-type: none"> Increase staff awareness and action to switch off non-essential equipment to reduce energy waste.
3	Elimination of petrol-powered gardener's equipment throughout Metro North in favour of battery powered low emission alternatives	Completed	<ul style="list-style-type: none"> Converted to battery operated tools and reduced CO2 emissions.
4	Upgrade / replace LED lighting to improve efficiency and reduce lighting related energy use	In progress	<ul style="list-style-type: none"> Reduced energy demand in kWh and emissions generated annually.
5	Upgrade HVAC equipment and associated infrastructure	Under investigation	<ul style="list-style-type: none"> Reduced energy demand in kWh and emissions generated annually.
6	Energy purchasing contracts (large and small) to increase the percentage of renewable generation powering Metro North sites	Ongoing	<ul style="list-style-type: none"> Increase the proportion of electricity sources to renewable source. Cost effective energy and savings.
7	Transition Metro North fleet vehicles to low emission EV alternatives to reduce travel related emissions (see also Transport Implementation Plan)	In progress	<ul style="list-style-type: none"> Transition to 100% passenger vehicle fleet to EV by 2026. EV fleet is growing. 65 EVs (June 2023) removing almost 210 tonnes CO2 emissions p.a year from the environment.
8	Increase integration of renewable solar PV systems throughout Metro North sites to reduce reliance on grid and increase energy security	In progress	<ul style="list-style-type: none"> Increase solar PV generation capacity. Aim to achieve 2MW installed capacity by 2030.
9	i-Hub pilot project to improve modelling of energy use throughout Metro North's high use equipment such as HVAC systems	In progress	<ul style="list-style-type: none"> Pilot underway at RBWH to use technology to analyse data and performance of heating and air conditioning systems using large data sets and real-time messaging.
10	Validate methodology for auditing Metro North property portfolio to plot building energy use and emission profile against net zero by 2050 and identify required upgrades needed to better plan and forecast to ensure Metro North meets the government targets		<ul style="list-style-type: none"> Partnership with QH, Office of Hospital Sustainability to determine a carbonisation pathway to net zero Define MN energy breakdown of facility building and carbon targets to include in a dashboard.

OUR SUSTAINABILITY OBLIGATIONS

