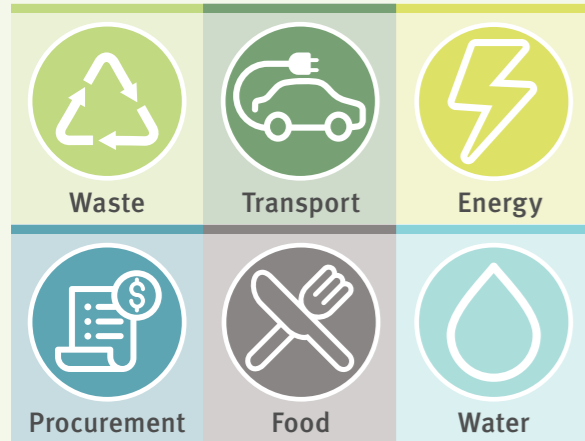


# GREEN METRO NORTH SUSTAINABILITY IMPLEMENTATION PLAN



# WASTE

## OUR GREEN INITIATIVES



Metro North Health is working toward making our health service greener and cleaner for our staff, our patients and our communities.

**We want to be the sustainability leader for the health industry.**

By reducing our environmental footprint and making our hospitals greener we can contribute to a brighter future for a healthier and more sustainable tomorrow. We are taking positive steps to enhance energy efficiency and to reduce waste. We are putting a range of actions for sustainable change into play across our six green initiative areas and will be supported by implementation plans to take action now.



**75%** RECYCLING RATES BY 2050

**90%** WASTE DIVERTED FROM LANDFILL BY 2050

**ZERO** NET EMISSIONS BY 2050



## OUR OBJECTIVES

We are exploring, implementing and managing initiatives to divert waste from landfill, enhance waste reduction and recycling, and embed circular economy principles through a responsible and sustainable waste management system across our health service.

Waste and resource recovery is a rapidly evolving industry with emerging technologies and services becoming available so we continue to explore new opportunities. We also address waste through the other initiatives within the Sustainability strategy including Procurement and Food, supported by effective operational service capability.

A key focus of upcoming clinical sustainability activities going forward will be reducing waste generated in clinical care such as transitioning away from single use plastics to reusable or compostable consumables where appropriate.

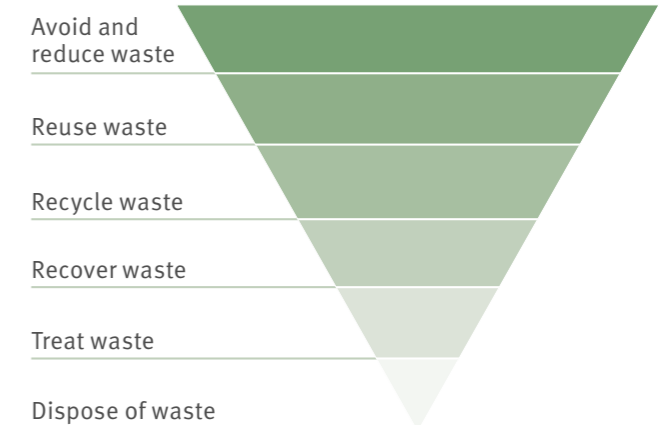
## IN ACTION



## WE WANT TO

- Follow best practice.
- Avoid creating waste in the first place.
- Take action to reduce environmental impacts prior to disposing of waste.

### Waste management hierarchy



**Metro North Health**



**Queensland Government**



	WHAT WE ARE DOING	STATUS	OUTCOME
1	Circular economy opportunities	In progress	<ul style="list-style-type: none"> <li>Enabling the reuse and regeneration of materials and products to eliminate waste.</li> <li>Food waste recycling and converting to compost.</li> <li>Reprocessing, reusing and recycling some clinical items such as PVC, compression garments and huck towels.</li> <li>Ongoing investigations into more circular economy opportunities as new technology becomes available such as recycling solutions for single use clinical consumables or suitable compostable alternatives.</li> </ul>
2	Data and reporting	In progress	<ul style="list-style-type: none"> <li>Improving data and reporting systems to better monitor waste management and landfill diversion, and identify further efficiencies and initiatives.</li> <li>Co-design reporting platforms with Department of Health Office of Hospital Sustainability.</li> <li>Investigating the addition of scales at larger sites to more accurately track and report on our waste volumes and recycling initiatives.</li> </ul>
3	Engagement and education	In progress	<ul style="list-style-type: none"> <li>Raising staff awareness of sustainable waste management and access to resources via environment and waste intranet pages.</li> <li>Enhanced signage and colour coding of bins to improve waste segregation, increase recycling and reduce contamination.</li> <li>Promoting National Recycling Week to raise awareness for recycling options at Metro North.</li> <li>Launched an internal Metro North Waste and Recycling Directory as a recycling initiatives educational tool for all waste streams.</li> <li>Online staff training available for Waste and Recycling Management.</li> <li>Internal Green Teams to generate ideas and help promote waste-related initiatives, campaigns and events.</li> </ul>

	WHAT WE ARE DOING	STATUS	OUTCOME
4	Infrastructure	Under investigation	<ul style="list-style-type: none"> <li>Enhancement to back-of-house waste areas to improve operational efficiency and sustainability outcomes.</li> <li>Plan to install bin wash bays at major sites to improve infection control outcomes.</li> </ul>
5	Item rehoming	In progress	<ul style="list-style-type: none"> <li>Unrequired and useable clinical consumables rehomed internally, sold via QLD Health auction site or provided to donation partners.</li> <li>Creation of an Item Rehoming Platform to rehome furniture, consumables and usable items internally, to reduce landfill and stock wastage.</li> </ul>
6	Partnerships	In progress	<ul style="list-style-type: none"> <li>Collaborating with community organisations to support positive environmental and social outcomes.</li> <li>10c container recycling with proceeds donated to our sites' charities.</li> <li>Upcycling materials into art projects.</li> <li>Exploring potential university partnerships for research studies.</li> </ul>
7	Recycling expansion	In progress	<ul style="list-style-type: none"> <li>Expansion of existing recycling streams throughout our facilities to capture a greater portion of waste.</li> <li>Expansion of recycling waste streams including E-waste, PVC, food organics, metal, batteries and comingled recycling.</li> </ul>
8	Waste collection point improvement	In progress	<ul style="list-style-type: none"> <li>Upgraded waste collection points that enable clear waste stream segregation and encourage reduced waste volumes.</li> <li>Bin free desk initiatives in office spaces to encourage better recycling and to reduce the use of plastic bin liners.</li> <li>Theatre waste and recycling trolleys established at STARS and expansion to other sites.</li> </ul>
9	Waste service optimisation	In progress	<ul style="list-style-type: none"> <li>Updated Metro North Waste and Recycling Management Policy and Procedure to align with current Queensland Government sustainability strategies and ensure compliance to waste reduction legislation and clinical and related waste guidelines.</li> <li>Waste system requirements in the design of new facilities and targets for construction waste included in the Sustainable Design Guidelines.</li> </ul>
10	Zero-emissions specialist transport	Under investigation	<ul style="list-style-type: none"> <li>Transitioning specialist transport used in waste management, like buggies and bin tugs, from fossil fuel to electric to reduce emissions.</li> </ul>

Initiatives may vary per site and are all at various stages of implementation.

## OUR SUSTAINABILITY OBLIGATIONS

