



Royal Brisbane and Women's Hospital

# RBWH Research Report 2024

Research Services

Metro North  
Health



Queensland  
Government



Metro North Health acknowledges the Traditional Custodians of the Land upon which we live, work and walk, and pay our respects to Elders both past and present.

Published by the State of Queensland (Metro North Hospital and Health Service), 2025

This document is licensed under a Creative Commons Attribution 3.0 Australia licence. To view a copy of this licence, visit [creativecommons.org/licenses/by/3.0/au](https://creativecommons.org/licenses/by/3.0/au)

© State of Queensland (Metro North Hospital and Health Service) 2025

You are free to copy, communicate and adapt the work, as long as you attribute the State of Queensland (Metro North Hospital and Health Service).

For more information, contact:

RBWH Research Services, Metro North Hospital and Health Service, Block 7, Level 8, Herston QLD 4006  
email [RBWH\\_Research\\_ESO@health.qld.gov.au](mailto:RBWH_Research_ESO@health.qld.gov.au)

An electronic version of this document is available at <https://metronorth.health.qld.gov.au/rbwh/research>.

Disclaimer:

The content presented in this publication is distributed by the Queensland Government as an information source only. The State of Queensland makes no statements, representations or warranties about the accuracy, completeness or reliability of any information contained in this publication. The State of Queensland disclaims all responsibility and all liability (including without limitation for liability in negligence) for all expenses, losses, damages and costs you might incur as a result of the information being inaccurate or incomplete in any way, and for any reason reliance was placed on such information.

# Contents

**Research Services ..... 2**

**Centre for Palliative Care Research and Education ..... 5**

**Herston Imaging Research Facility ..... 14**

**Jamieson Trauma Institute..... 21**

# Research Services

## Director's message

It is my pleasure to present the 2024 Royal Brisbane and Women's Hospital (RBWH) Research Report, which highlights the exceptional work carried out by RBWH clinicians, research staff and higher degree scholars over the past year. This annual report also recognises the important role of consumers in research and co-design activities at RBWH,<sup>1</sup> and the collaboration with our research partners to further discovery, knowledge translation and system-wide improvements in patient care with local, national and international impact.

This year has been marked by many noteworthy achievements and events. In January, RBWH was assessed for the first time under the National Clinical Trials Governance Framework, providing an important benchmark for the conduction of clinical trials and partnering with consumers in research. The RBWH Research Council was re-established to provide strategic leadership and operational oversight of research at RBWH.

This report features 892 journal articles, 15 book chapters and 387 keynote and plenary lectures, as well as numerous research grants, authored, presented or received by RBWH staff and consumers. Over two grant rounds, the RBWH Foundation awarded 13 research grants to RBWH staff. Research Services, with funding from the RBWH Study Education and Research Trust Account Advisory Committee, awarded 16 research project grants and 9 early career researcher fellowships and scholarships. A further highlight was the 2024 Herston Health Precinct Symposium featured in this report.

In 2024, RBWH researchers received numerous accolades with 24 individuals named in the Stanford University [list](#) of the top 2 per cent of the most-cited scientists in the world. Professor Leonie Callaway (also on this list) received the prestigious Metro North Health Researcher of the Year award in recognition of her exceptional collaborative leadership, mentorship and national and international contributions to improving the health of women, children and families.

Research and innovation that partners with and transforms clinical care is a cornerstone of our mission, and the activity detailed in this report reflects the Metro North Health vision that together we deliver exceptional health outcomes through globally recognised discovery and translation. I invite you to explore the achievements documented in this report and to join me in celebrating the spirit of innovation, inquiry and research excellence that is RBWH.



**Dr Joel Dulhunty**  
**Director of Research**  
**Royal Brisbane and Women's Hospital**

<sup>1</sup> In this report, consumers are defined as people who use, or are potential users, of health services, including their family and carers, excluding staff. The following numerical code is used in the research activity tables (fourth column) to indicate the highest level of consumer engagement in the project: 1 = **Partnership** (e.g. consumer leadership or partnership at an investigator level); 2 = **Consultation** (e.g. consumer input into study design); 3 = **Involvement** (e.g. consumer involvement as a participant); 4 = **Not applicable or no consumer involvement**.



## 2024 Herston Health Precinct Symposium

The RBWH and Herston precinct partners, with Symposium sponsors (CSIRO, QIMR Berghofer, Queensland University of Technology, QUT Centre for Immunology and Infection Control, University of Queensland Centre for Clinical Research and RBWH Foundation), hosted the annual Herston Health Precinct Symposium from 2nd to 4th September at the RBWH Education Centre. The theme of this year's event was 'The Power of Partnership' and the aim of the three-day event was to showcase and celebrate research excellence on the Herston campus that embodies the Metro North Research vision: *Together we deliver exceptional health outcomes through globally recognised discovery and translation.*

A new program layout incorporated 39 seven-minute oral presentations and 131 posters that were sourced from 187 abstract submissions and covered a wide range of clinical research topics, including health equity and access to innovative clinical care and research, consumer partnership and co-design, and new ways to connect clinicians, researchers and community through technology. Invited speakers included:

- Professor Tony Kenna, Faculty of Health, School of Biomedical Sciences, QUT, speaking on 'Harnessing the potential of genomics in inflammatory disorders'
- Dr Julia Hocking, Manager, Funding and Research Partnerships, Stryker discussing 'Research collaboration in an open innovation ecosystem: Establishing the Stryker R&D Lab at the Herston Health Precinct'
- Professor Cate Cameron, Principal Research Fellow, Jamieson Trauma Institute, talking on 'Community opioid dispensing after injury (CODI)'
- Dr Jurgen Fripp, Australian e-Health Research Centre Group Leader, Biomedical Informatics, CSIRO, and Professor Michelle Lupton, Team Head, Neurogenetics and Dementia, QIMR Berghofer, with a presentation discussing 'Queensland Aging and Dementia Study (QADS)'
- Dr Hafiz Abdul-Aziz, Research Fellow, UQCCR, speaking on 'The Beta-Lactam Infusion Group (BLING) program of research'
- Associate Professor Joy Wolfram, Principal Research Fellow, School of Chemical Engineering, Faculty of Engineering, Architecture and Information Technology, UQ, speaking on 'Predicting central line-associated bloodstream infection (CLABSI).'

A panel discussion was held with the topic of 'Innovative research pathways for clinicians and consumers', chaired by Peter Buttrum, Acting Executive Director, Women's and Newborn Services.

The Great Debate 'Quantitative research is better than qualitative' was chaired by Dr Joel Dulhunty, A/Director of Research, RBWH. A 3D printed perpetual trophy, designed and created by the Herston Biofabrication Institute, was awarded to the affirmative team comprising Associate Professor Angela Watson, Motor Accident Insurance Commission Principal Research Fellow, QUT, and Professor Adrian Barnett, Australian Centre for Health Services Innovation, School of Public Health and Social Work, QUT.

Professor Elizabeth Powell, Clinical Director, QIMR Berghofer, provided the Keynote presentation 'Aspiring clinician-researchers – the Herston Health Precinct needs you!'

## Symposium Awards

Award	Winner	Title
<b>Dr Jennifer Paratz Allied Health Research Award</b>	Elise Byrne	MOVIN in ICU: An observational study of mobilisation on vasopressors & inotropes in intensive care
<b>Dr Stephen Morrison Best Clinical Research Award</b>	Julie Wixey	Impact of non-steroidal anti-inflammatory drug administration of neurodevelopmental outcomes in small for gestational age neonates
<b>Consumer Partnership in Research Award</b>	Dale Trevor	How good was your meal? Partnering with consumers to improve the quality of hospital food.
<b>Professor William Egerton Best Discovery and Innovation Research Award</b>	Jaikrishna Balakittnen	Beyond conventional biopsies: The promise of salivary miRNAs in the diagnosis and prediction of oral cancer

Award	Winner	Title
Professor Lawrie Powell AC Early Career Research Award	Dr Aurélie Benfield	Cyclic host-defense peptides kill proliferative, non-proliferative and drug-resistant melanoma cells without inducing resistance
Higher Degree Research Award	Hannah Olufson	From documents to digital: Co-design nutrition videos to improve patient care
Cecilia Brazil Nursing & Midwifery Research Award	Dr Deanne August	Neonatal skin injury measurement: A prognostic and feasibility trial
Professor Jeffrey Lipman AM Best Translational Research Award	Dr Jen Setchell, Caroline Zanussi, Morgan Brodhurst-Hill	What does propa collaborative design of a persistent pain service for mob really look like?



# Centre for Palliative Care Research and Education



**Distinguished Professor Patsy Yates**  
**Director**  
**Centre for Palliative Care Research and Education**

## Research Highlights

The primary role of the Centre for Palliative Care Research and Education (CPCRE) is to enhance palliative care services in Queensland through research and education endeavours. To achieve these aims, CPCRE operates as a 'centre without walls', committed to building and fostering partnerships with the palliative care community in its endeavours.

### Highlights of 2024:

Prof Janet Hardy presented the results of the second randomised control of medicinal cannabis given to cancer patients with symptoms receiving palliative care (MedCan-2, THC/CBD 1:1 vs placebo) at the American Society of Clinical Oncology (ASCO) annual meeting in Chicago in July 2024. The abstract was selected for a subsequent 'best of ASCO' presentation.

In conjunction with the Queensland Regional Clinical Trials Coordinating Centre (QRCCC) MedCan-3 (THC/CBD 1:20) has been developed as part of the Queensland-wide Teletrial program. This is the first palliative care trial to be included in this program and will allow patients in rural and remote areas the opportunity to participate in research programs.

CPCRE staff have continued collaborative research projects in 2024. Research projects are multi-disciplinary and are across institutions (within Queensland and across Australia), and results have been published in national and international peer reviewed publications. CPCRE staff hold appointments on state, national and international Palliative Care/Oncological and Nursing and Medical advisory boards/reference groups.

CPCRE education activities include: the General Practice Palliative Care Education Program; the Program of Experience in the Palliative Approach; the Evidence Based Palliative Care Strategy; the Queensland Palliative Care Research Group and Workforce Development Programs. The Centre disseminates palliative care education and research information to health professionals via: the CPCRE website, CPCRE newsletter (quarterly), CPCRE calendar (biannually), CPCRE E-Bulletins (bimonthly), the Annual Research Conference and the Annual Update Symposium (topic rotates three-yearly between general medicine, oncology and supportive care); the Master Class Series and the Annual Nurse Practitioner Symposium.

### Benefits for clinical practice:

The Centre's work focuses on:

- developing the capacity of the palliative care workforce to provide quality palliative care
- improving the links between research and practice in palliative care
- promoting palliative care research to inform care and support novice researchers in the sector, and
- providing information which supports the delivery of palliative care services.

## Successful Research Higher Degree candidates in 2024

Name	Title	Month Completed	Affiliated University	Summary
Theodora Ogle (PhD)	Symptom management for chemotherapy-induced peripheral neuropathy	June 2024	QUT (2017-2024) Kim Alexander, <b>Patsy Yates</b>	Partial embargo

## Research Awards and Achievements

Recipient (RBWH staff in bold)	Award	Event
<b>Hardy, J</b>	Abstract 12020: A randomized, double-blind controlled trial of medicinal cannabis vs placebo for symptom management in patients with advanced cancer receiving palliative care, for presentation at the 2024 ASCO Annual Meeting	Hand-selected to be included in the 2024 Best of ASCO Annual Meeting program, Chicago, USA, 31 <sup>st</sup> May – 4 <sup>th</sup> June 2024
<b>Hardy, J</b>	Mater People Awards 2024	Joint winner, Mater Research Excellence Award, Mater Health Services, 4 <sup>th</sup> October 2024
<b>Hardy, J</b>	2024 Palliative Care Queensland Lifetime Achievement Award Winner	2024 Palliative Care Queensland Summit and Awards, 11 <sup>th</sup> October 2024

## Research Grants

Investigator Names (RBWH staff in bold)	RBWH Departments / Research Groups	Research Project Title	Granting Body	Total Awarded (whole all years)	Length of Awards in years and years active
Bradford, N., Ekberg, S., Brain, D., <b>Yates, P.</b> , & Hassall, T	Centre for Palliative Care Research and Education	Childhood brain cancer survivorship and palliative care effects on family functioning (CASPER)	Children's Health Foundation Queensland	\$400,056	6 years, 2020-2025
Beesley, V., Neale, R., Turner, J., <b>Yates, P.</b> , Wyld, D., Chan, R. & Gordon, L.	Centre for Palliative Care Research and Education	PRoCESS: Pancreatic cancer Relatives Counselling and Education Support Service trial	National Health and Medical Research Council, Medical Research Future Fund	\$801,229	6 years, 2020-2025
Willmott, L., White, B. & <b>Yates, P</b>	Centre for Palliative Care Research and Education	Services to develop and provide online voluntary assisted dying participating practitioner training	Department of Health (WA)	\$996,165	6 years, 2020-2025
Chan, R., <b>Yates, P.</b> , Emery, J., Koczwara, B., Mann, G., Eakin, E., Turner, M., Krishnasamy, M., Gordon, L., Skerman, H	Centre for Palliative Care Research and Education	Implementation of a nurse-enabled, shared-care follow-up model of early Breast cancer survivorS (The IBIS-Survivorship Study)	National Health and Medical Research Council (APP1170519)	\$1,490,635	5 years, 2021-2025
Chan, R., Emery, J., <b>Yates, P.</b> , Dunn, J.C., Hart, N., Koczwara, B., Gordon, L., Jefford, M., Vela, I., Jones, L., Davis, I., Sengupta, S., Ee, C., Halcomb, E., Rhee, J., Sara, S., Hemming, K., Pryor, D., Shub, M & Raupach, A	Centre for Palliative Care Research and Education	A Hybrid, Implementation-Effectiveness Trial of a Nurse-Enabled, Shared-Care Model Between Primary and Acute Care for proStatE Cancer Survivors (The MOSES Trial)	National Health and Medical Research Council MRFF (MRF2006113)	\$1,667,960	4 years, 2021-2024



Investigator Names (RBWH staff in bold)	RBWH Departments / Research Groups	Research Project Title	Granting Body	Total Awarded (whole all years)	Length of Awards in years and years active
Virdun, C., Matthews, R., Mudge, A.M., <b>Yates, P.</b> , Singh, G., Phillips, J., Carter, H	Centre for Palliative Care Research and Education	Improving the quality of hospital care for people with serious illness through patient experience measurement and feedback informing facilitated ward-based improvement: an implementation pilot study (The PREM-QUAL study)	Metro North Hospital and Health Service	\$24,696	3 years, 2022-2024
Webb, P., Chan, R., Brown, B., Wyld, D., Gordon, L.G., Hartel, G., Eastgate, M.A., Wishart, L., Nund, R., <b>Yates, P</b>	Centre for Palliative Care Research and Education	PROMISE: Patient-Reported Outcome Measures in cancer care: a hybrid effectiveness-Implementation trial to optimise Symptom control and health service Experience	Cancer Council Queensland – Accelerating Collaborative Cancer Research Grants	\$196,625	4 years, 2021-2024
Good, P., <b>Hardy, J.</b> , Haywood, A., Olson, R., Greer, R., Philip, J., <b>Yates, P.</b> & Mendis, R	Centre for Palliative Care Research and Education	Medicinal Cannabis (MedCan 3) – randomised, multicentre, double blind, placebo-controlled trial to assess THC/CBD (1:20) to relieve symptom burden in patients with cancer	National Health and Medical Research Council MRFF (APP2006191)	\$1,526,796	5 years, 2021-2025
<b>Yates, P</b>	Centre for Palliative Care Research and Education	Optimising palliative care services to deliver better value health care for older persons	National Health and Medical Research Council Investigator Grant (APP2009529)	\$1,500,000	6 years, 2021-2026
Hudson, P., Philip, J., Francis, J., De Abreu Lourenco, R., Juraskova, I., Gray, K., Jefford, M., Kapp, S., Coher, J., Al's: Phillips, J., <b>Yates, P.</b> , Athan, S., Brown, L., De Vleminck, A., Chang, S., Thomas, K	Centre for Palliative Care Research and Education	Improving the wellbeing of people with advanced cancer and their family carers: An effectiveness-implementation trial of an Australian dyadic digital health intervention (FOCUSau)	National Health and Medical Research Council TCR into End-of-Life Care (APP2006170)	\$1,095,278	5 years, 2021-2025
<b>Hardy, J.</b> , Good, P	Centre for Palliative Care Research and Education	Data Management Grant	Cancer Council Queensland	\$69,000	2024 (reviewed yearly)
Gurgenci, T., <b>Hardy, J.</b> , Good, P., Moniruzzaman, M., & Begun J	Centre for Palliative Care Research and Education	Medicinal cannabis inflammation and symptoms in advanced cancer	2022 TRI LINC Scheme grant	\$49,988	5 years, 2022-2026
Currie, A., Hooper, K., Alexander, K. & <b>Yates, P</b>	Centre for Palliative Care Research and Education	Social, Spiritual and Emotional Korumba for Aboriginal and Torres Strait Islander People at End of Life	St Vincent's Private Hospital Northside	\$30,000	1 year, 2023-2024
Menant, J., Sturniek, D., Parks, S., Goldstein, D., Lord, S., Davis, J., Mizrahi, D., Koczwara, B., Grimison, P. & <b>Yates, P</b>	Centre for Palliative Care Research and Education	Cognitive-motor step training to reduce chemotherapy-induced peripheral neuropathy (CIPN) symptoms in cancer survivors	National Health and Medical Research Council CTCS (GNT2023730)	\$808,942	5 years, 2023-2027
Ekberg, S., Slade, D., Ekberg, K., Bradford, N., <b>Yates, P.</b> , Sansom-Daly, U.M., Reymond, E.J., Herbert, A.R	Centre for Palliative Care Research and Education	Understanding communication about advance care planning across the lifespan	Australian Research Council (DP240100072)	\$519,459	3 years, 2024-2026

Investigator Names (RBWH staff in bold)	RBWH Departments / Research Groups	Research Project Title	Granting Body	Total Awarded (whole all years)	Length of Awards in years and years active
<b>Yates, P.</b> , Noel, J., Hulme, A., Olsen, D., Roberts, G. & Bath, K	Centre for Palliative Care Research and Education	First Nations Palliative Care Consultation: A component of the Greater Choice for At Home Palliative Care Initiative	Murrumbidgee Primary Health Network	\$60,000	1 year, 2024
Bradford, N., Ekberg, S., Samsom-Daly, U.M., Hynson, J., Carter, H., <b>Yates, P.</b> , Bowers, A., Vemuri, S. & Evans, H	Centre for Palliative Care Research and Education	Centre for Research Excellence for Paediatric Palliative Care	National Health and Medical Research Council (GNT2035240)	\$3,000,000	7 years, 2024-2030

## RBWH Department / Research Group Led Research Activity

Lead Investigator Name (RBWH staff and consumers in bold)	Other Study Investigators (RBWH staff and consumers in bold)	Research Project Title	Consumer involvement	Number of RBWH Patients Recruited
<b>Hardy, J</b>	<b>Hardy, J.</b> , Good, P., Lintzeris, N., Martin, J., <b>Yates, P.</b> , Chye, R., Haywood, A., Olsen, R	Oral Medicinal Cannabinoids to Relieve Symptom Burden in the Palliative Care of Patients with Advanced Cancer: a double-blind, placebo controlled, randomised clinical trial of efficacy and safety of 1:1 delta-9-tetrahydrocannabinol (THC) and Cannabidiol	2	2
<b>Hardy, J</b>	<b>Hardy, J.</b> , Good, P., Huggett, G	Exploratory analysis of post-trial use of medicinal cannabis	4	0

## Collaborative Research Activity Involving RBWH Department / Research Group

Lead Investigator Name (RBWH staff and consumers in bold)	Other Study Investigators (RBWH staff and consumers in bold)	Research Project Title	Consumer involvement	Number of RBWH Patients Recruited
Good, P.	Good, P., <b>Hardy, J.</b> , Haywood, A., Olsen, R., Greer, R., Philip, J., <b>Yates,</b> <b>P.</b> , Mendis, R., Gurgenci, T.	Medicinal Cannabis (MedCan 3) – randomised, multicentre, double-blind, placebo-controlled trial to assess THC/CBD (1:20) to relieve symptom burden in patients with cancer	2	0

## Research Publications

### Authors

Investigator	ORCID ID	Investigator	ORCID ID
Patsy Yates	<a href="https://orcid.org/0000-0001-8946-8504">https://orcid.org/0000-0001-8946-8504</a>	Janet Hardy	<a href="https://orcid.org/0000-0003-1127-9951">https://orcid.org/0000-0003-1127-9951</a>

## Publications in 2024

### Journal Articles (RBWH staff or consumers in bold)

Sansone, H., Ekberg, S., Lord, S., Stevenson, J., Martinez, K. & **Yates, P.** Managing understandings of palliative care as more than care immediately before death: Evidence from observational analysis of consultations. *Health Expectations*, (2024), 27:e13903

Watts, J., Ekberg, S., Bluebond-Langner, M., Langner, R., Fleming, S., Danby, S., Ekberg, K., **Yates, P.**, Bradford, N., Delaney, A. & Herbert, A. Questions directed to children with diverse communicative competencies in paediatric healthcare consultations. *Patient Education and Counseling*, (2024), 121:108103

Lee, J., Han, C.Y., Fox, A., Crawford-Williams, F., Joseph, R., **Yates, P.**, Thamm, C. & Chan, R.J. Are Australian cancer and palliative care nurses ready to prescribe medicines? A national survey. *Seminars in Oncology Nursing*, (2024), 40(1):151578

## Journal Articles (RBWH staff or consumers in bold)

- White, B., Feeney, R., Sellars, M., Neller, P., **Yates, P.** & Willmott, L. 'Can a relative override a patient's Advance Care Directive?': end-of-life legal worries of general practitioners and nurses working in aged care. *Australian Journal of Primary Health*, (2024), 30: PY23213
- Crichton, M., Dissanayaka, T., Marx, W., Gamage, E., Travica, N., Bowers, A., Isenring, E., **Yates, P.** & Marshall, S. Does medicinal cannabis affect depression, anxiety, and stress in people with cancer? A systematic review and meta-analysis of intervention studies. *Maturitas*, (2024), 184: 107941
- Thamm, C., McCarthy, A.L. & **Yates, P.** A discourse of deviance: Blame, shame, stigma and the social construction of head and neck cancer. *Qualitative Health Research*, (2024), 34(5), 398-410
- Milley, K., Druce, P., McNamara, M., Bergin, R.J., Chan, R.J., Cust, A.E., Davis, N., Fishman, G., Jefford, M., Rankin, N., **Yates, P.** & Emery, J. Cancer in general practice research priorities in Australia. *Australian Journal of General Practice*, (2024), 53(4), 227-234
- Laidsaar-Powell, R., Giunta, S., Butow, P., Keast, R., Koczwara, B., Kay, J., Jefford, M., Turner, S., Saunders, C., Schofield, P., Boyle, F., **Yates, P.**, White, K., Miller, A., Butt, Z., Bonnaudet, M. & Juraskova, I. Development of web-based education modules to improve carer engagement in cancer care: Design and user experience evaluation of the e-triadic oncology (eTRIO) modules for clinicians, patients, and carers. *JMIR Medical Education*, (2024), 17:10:e50118
- Spooner, A.J., Turner, J., Button, E., **Yates, P.**, Kennedy, G., Butler, J., Bradford, N., Chan, A., Hart, N.H. & Chan, R.J. Supporting cancer survivors following treatment for non-hodgkin's and Hodgkin's Lymphoma: A pilot study assessing the feasibility and process outcomes of a nurse-led intervention. *Seminars in Oncology Nursing*, (2024), 40(2), 151592
- Shin, J., Miaskowski, C., Wong, M.L., **Yates, P.**, Olshen, A.B., Roy, R., Dokiparthi, V., Cooper, B., Paul, S., Conley, Y.P., Levine, J.D., Hammer, M.J. & Kober, K. Perturbations in inflammatory pathways are associated with shortness of breath profiles in oncology patients receiving chemotherapy. *Supportive Care in Cancer*, (2024), 32:250
- Rhee, J.J., Grant, M., Senior, H., Monterosso, L., McVey, P., Johnson, C., Aubin, M., Nwachukwu, H., Bailey, C., Fallon-Ferguson, J., **Yates, P.**, Williams, B. & Mitchell, G. Facilitators and barriers to general practitioner and general practice nurse participation in end-of-life care: systematic review. *BMJ Supportive & Palliative Care*, (2024), 14(e1):e12-e22
- Johnson, C.E., McVey, P., Rhee, J.J.-O., Senior, H., Monterosso, L., Williams, B., Fallon-Ferguson, J., Grant, M., Nwachukwu, H., Aubin, M., **Yates, P.** & Mitchell, G. General practice palliative care: patient and carer expectations, advance care plans and place of death – a systematic review. *BMJ Supportive & Palliative Care*, (2024), 14(e1): e642-e651
- Senior, H., Grant, M., Rhee, J.J., Aubin, M., McVey, P., Johnson, C., Monterosso, L., Nwachukwu, H., Fallon-Ferguson, J., **Yates, P.**, Williams, B. & Mitchell, G. General practice physicians' and nurses' self-reported multidisciplinary end-of-life care: a systematic review. *BMJ Supportive & Palliative Care*, (2024), 14(e1): e1-e11
- Deckx, L., Mitchell, G., Rosenberg, J., Kelly, M., Carmont, S.-A. & **Yates, P.** General practitioners' engagement in end-of-life care: a semi-structured interview study. *BMJ Supportive & Palliative Care*, (2024), 14(e1): e719-e726
- Mitchell, G., Aubin, M., Senior, H., Johnson, C., Fallon-Ferguson, J., Williams, B., Monterosso, L., Rhee, J.J., McVey, P., Grant, M., Nwachukwu, H. & **Yates, P.** General practice nurses and physicians and end of life: a systematic review of models of care. *BMJ Supportive & Palliative Care*, (2024), 14(1): e23-e29
- White, B.P., Willmott, L., Sellars, M. & **Yates, P.** Prospective oversight and approval of assisted dying cases in Victoria, Australia: a qualitative study of doctors' perspectives. *BMJ Supportive & Palliative Care*, (2024), 14(e1): e1462-e1471
- Gurgenci, T., Hardy, J., Huggett, G., Foster, K., Pelecanos, A., Greeg, R., Philip, J., Haywood, A., Mendis, R., **Yates, P.** & Good, P. Medicinal Cannabis (MedCan 3): a randomised, multicentre, double-blind, placebo-controlled trial to assess THC/CBD (1:20) to relieve symptom burden in patients with cancer – a study protocol for a randomised controlled trial. *Trials*, (2024), 25:293
- Laidsoor-Powell, R., Giunta, S., Butow, P., Turner, S., Costa, D., Saunders, C., Koczwara, B., Kay, J., Jefford, M., Schofield, P., Boyle, F., **Yates, P.**, White, K., Sundaresan, P., Varadarajan, S. & Juraskova, I. An online intervention to improve oncology health professional self-efficacy in communicating with carers: Hybrid effectiveness-implementation evaluation of the eTRIO program. *Patient Education and Counseling*, (2024), 124:108251
- Neller, P., Feeney, R., Willmott, L., Then, S.-N., Munro, E., Cain, K., **Yates, P.** and White, B.P. Australian Indigenous people and treatment decision-making at end-of-life. *Alternative Law Journal*, (2024), 49(2), 104-113
- Thomy, L.B., Crichton, M., Jones, L., **Yates, P.M.**, Hart, N.H., Collins, L.G. & Chan, R.J. Measures of financial toxicity in cancer survivors: a systematic review. *Supportive Care in Cancer*, (2024), 32(7),40
- Gurgenci, T., Hardy, J., Huggett, G., Foster, K., Pelecanos, A., Greer, R., Philip, J., Haywood, A., Mendis, R., **Yates, P.** & Good, P. (Correction) Medicinal Cannabis (MedCan 3): a randomized, multicentre, double-blind, placebo-controlled trial to assess THC/CBD (1:20) to relieve symptom burden in patients with cancer – a study protocol for a randomized controlled trial. *Trials*, (2024), 25, (293), 10.1186/s13063-024-08091-z). *Trials*, (2024), 25(1), 350
- Singh, G.K., Mudge, A., Matthews, R., **Yates, P.**, Phillips, J.L. & Virdun, C. Experience of care from the perspectives of inpatients with palliative care needs: a cross-sectional study using a patient reported experience measure (PREM). *BMC Palliative Care*, (2024), 23(1):177

## Journal Articles (RBWH staff or consumers in bold)

Hudson, P., Francis, J., Cohen, J., Kapp, S., De Abreu Lourenco, R., Beatty, L., Gray, K., Jefford, M., Juraskova, I., Northhouse, L., de Vleminck, A., Chang, S., **Yates, P.**, Athan, S., Baptista, S., Klaic, M. & Philip, J. Improving the well-being of people with advanced cancer and their family caregivers: protocol for an effectiveness-implementation trial of a dyadic digital health intervention (FOCUSau). *JMIR Research Protocols*, (2024), 13: e55252

Skrabal Ross, X., Condon, P., **Yates, P.**, Walker, R., Herbert, A. & Bradford, N. Feasibility of weekly electronic patient- and proxy-reported outcome measures in pediatric oncology. *Cancer Nursing*, (2024), 47(5), e318-e326

Xu, X., Liu, W-H. & **Yates, P.** Changes in skeletal muscle mass in the first 3 months following gastrointestinal cancer surgery: A prospective study. *Annals of Surgical Oncology*, (2024), 31, 8651-8663

Willmott, L., Feeney, R., **Yates, P.**, Parker, M., Waller, K. & White, B.P. A cross-sectional study of the first two years of mandatory training for doctors participating in voluntary assisted dying. *Palliative and Supportive Care*, (2024), 22(4), 674-680

White, B.P., Willmott, L., Feeney, R., Neller, P., Then, S.-N., Bryant, J., Waller, A. & **Yates, P.** Limitations in health professionals' knowledge of end-of-life law: a cross-sectional survey. *BMJ Supportive & Palliative Care*, (2024), 14(e3), e2611-e2618

Haupt, L.M., Haywood, A., Sutherland, H.G., Yu, C., Albury, C.L., Pharasi, A., Zunk, M., George, R., Griffiths, L.R., Good, P., **Hardy, J.** Methadone for pain management in palliative care - does OPRM1 118A>G play a role in inter-patient variability? *Scientific Reports*, (2024), 14(1):3411

O'Leary, C., Greer, R., Huggett, G., Good, P., Gurgenci, T., **Hardy, J.** Disease progression and survival in patients with advanced cancer receiving cannabidiol oil or placebo. *BMJ Supportive Palliative Care*, (2024), May 17, 14(2):191-194. DOI: 10.1136/spcare-2023-004746. PMID: 38307703 Clinical Trial

Podbury, B., Gurgenci, T., Huggett, G., Greer, R., **Hardy, J.**, Good, P. The relationship between psychological distress and physical symptoms in patients with advanced cancer: A cross-sectional study. *BMJ Supportive & Palliative Care*, (2024), Jun 4:spcare-2024-004940. DOI: 10.1136/spcare-2024-004940. Epub ahead of print. PMID: 38834233

Gurgenci, T., **Hardy, J.**, Good, C., Good, P. Preliminary results from a phase IV surveillance study of medical cannabis use in Australian patients with advanced cancer receiving palliative care. *Journal of Palliative Medicine*, (2024), May, 27(5):663-666. DOI: 10.1089/jpm.2023.0358. Epub 2024 Apr 12. PMID: 38608233

Gurgenci, T., **Hardy, J.**, Huggett, G., Foster, K., Pelecanos, A., Ristan, G., Philip, J., Haywood, A., Mendis, R., Yates, P. & Good, P. Medicinal cannabis (MedCan 3): a randomised, multicentre, double-blind, placebo-controlled trial to assess THC/CBD (1:20) to relieve symptom burden in patients with cancer—a study protocol for a randomised controlled trial. *Trials*, (2024), 25:293 DOI: 10.1186/s13063-024-08091-z

Gurgenci, T., O'Leary, C., Hui, D., Yennu, S., Bruera, E., Davis, M., Agar, M., Zimmerman, C., Philip, J., Mercadante, S., **Hardy, J.**, Rosa, W.E., Good, P. Top ten tips palliative care clinicians should know about interpreting a clinical trial. *Journal of Palliative Medicine*, (2024), Jul 24. DOI: 10.1089/jpm.2024.0258. Epub ahead of print. PMID: 39046924

Gurgenci, T., O'Leary, C., Philip, J., Bruera, E., Davis, M., Agar, M., Hui, D., Zimmerman, C., Yennu, S., **Hardy, J.**, Mercadante, S., Rosa, W.E., Good, P. Top ten tips palliative care clinicians should know about designing a clinical trial in palliative care. *Journal of Palliative Medicine*, (2024), (in press) DOI: 10.1089/jpm.2024.0259

**Hardy, J.** Medicinal cannabis – has it found a place in palliative care? *Palliative Care and Social Practice*, (2024), 18. DOI:10.1177/26323524241273491

Downs, G., Greer, R., Moses, G., Gurgenci, T., Good, P., **Hardy, J.** "Drug interactions in people on cannabidiol – is there cause for concern?" *Cannabis and Cannabinoid Research* 2024 Published Online: 14 November (2024), <https://doi.org/10.1089/can.2024.0041>

**Hardy, J.**, Greer, R., Gurgenci, T., Kearney, A., Ladwa, R., Huggett, G. & Good, P. A randomized, double-blind controlled trial of medicinal cannabis vs placebo for symptom management in patients with advanced cancer receiving palliative care. (Meeting Abstract: 2024 ASCO Annual Meeting), *Journal of Clinical Oncology*, (2024), 29 May, Vol 42, No.16 supplement. [https://doi.org/10.1200/JCO.2024.42.16\\_suppl.12020](https://doi.org/10.1200/JCO.2024.42.16_suppl.12020)

Foster, K., Mitchell, G., Richard, E., Steadman, K., Senior, H., Estafanos, R., **Hardy, J.** Orally dissolving pilocarpine tablets for xerostomia in advanced cancer: a pilot N-of-1 feasibility study. *Journal of Palliative Medicine*, (online 24 Dec 2024), *Palliative Medicine*, (2025);39(2):298-306. DOI:10.1177/02692163241306269.

## Book Chapters (RBWH staff or consumers in bold)

Miller, E., **Yates, P.**, Johnstone, S. & Hargraves, M. Co-designing the palliative care hospital experience with clinicians, patients, and families: Reflections from a co-design workshop with clinicians. In Miller, E., Winter, A. & Chari, S. *How Designers are Transforming Healthcare*. Springer, Singapore, (2024), pp.207-219

Smith, A., Olson, R., Cuerton, M., Khalil, K.A., Good, P. & **Hardy, J.** Chapter 4 Measuring Wellbeing: A Critical Rapid Review of Scales Used in Advanced Cancer Context pp63-81. *Researching contemporary wellness cultures*. Smith, N., Southerton, C., Clark, M. eds, (Published 3 Jul 2024), Emerald Publishing Limited, Leeds, pp. i-xii. <https://doi.org/10.1108/978-1-80455-584-220241012>.



## Keynote or Plenary Lectures given in 2024

Date	Title
Conference Presentations	
01/08/2024	<b>Yates, P.</b> (Panel Member) Australian Government Department of Health and Aged Care Workshop: Palliative Care Conversations: Finding compassion and clarity in challenging situations. Palliative Care Nurses Australia Biennial Conference 2024, Melbourne, Australia, 1 <sup>st</sup> August 2024
02/08/2024	Singh, G., Mudge, A., Matthews, R., <b>Yates, P.</b> , Phillips, J. & Virdun, C. Quality of care of inpatients with palliative care needs using patient reported experience data. Palliative Care Nurses Australia Biennial Conference 2024, Melbourne, Australia, 2 <sup>nd</sup> August 2024
02/08/2024	Virdun, C., Button, E., Phillips, J., Saunders, C., <b>Yates, P.</b> & Lockett, T. Feasibility of implementing a brief Patient Reported Experience Measure for inpatients with palliative care needs. Palliative Care Nurses Australia Biennial Conference 2024, Melbourne, Australia, 2 <sup>nd</sup> August 2024
02/08/2024	Bowers, A., Singh, G., Bradford, N., Ekberg, S., McLarty, A., Herbert, A., Ekberg, K., <b>Yates, P.</b> & Dettrick, Z. Paediatric palliative care in Australia: An overview of the need. Palliative Care Nurses Australia Biennial Conference 2024, Melbourne, Australia, 2 <sup>nd</sup> August 2024
06/09/2024	<b>Yates, P.</b> (Session Chair) Workforce. ANZSPM 2024 Biennial Conference, Adelaide, Australia, 6 <sup>th</sup> September 2024
06/09/2024	<b>Yates, P.</b> Preparing the workforce for the future: What capabilities will be required. ANZSPM 2024 Biennial Conference, Adelaide, Australia, 6 <sup>th</sup> September 2024
18/09/2024	<b>Yates, P.</b> (Plenary Chair) Training and education to leverage diverse workforces for enhancing cancer patient care journeys and experiences. World Cancer Congress 2024, Geneva, Switzerland, 18 <sup>th</sup> September 2024
08/11/2024	<b>Yates, P.</b> How can aged care services and aged care staff improve their advance care planning practice? National Advance Care Planning Symposium, Adelaide, Australia, 8 <sup>th</sup> November 2024
13/11/2024- 15/11/2024	Beesley, V., Roset, N., Turner, J., <b>Yates, P.</b> , Wyld, D., Eastgate, M., Chan, R., Collins, L., Stewart, M., Beebe, H., Malt, M., Kelly, C. & Neale, R. "Signing up for the PROCESS (Pancreatic cancer Relatives Counselling and Education Support Service) Trial was the most important thing I did as a carer". COSA's 51st Annual Scientific Meeting, Gold Coast, Australia, 13 <sup>th</sup> - 15 <sup>th</sup> November 2024
18/11/2024	<b>Yates, P.</b> Evolving models of cancer care in Australia. Study Coordinator Workshop (Models of care in Australia and Aotearoa New Zealand), Australian Gastrointestinal Trials Group (AGITG) 26th ASM, Brisbane, Australia, 18 <sup>th</sup> November 2024
08/02/2024	O'Leary, C., Greer, R., Huggett, G., Good, P., Gurgenci, T & <b>Hardy, J.</b> Disease progression and survival in patients with advanced cancer receiving cannabidiol oil: A MEDCAN-1 Sub-Study. IAPC 23 <sup>rd</sup> Annual Education & Research Seminar 2024, Dublin, Ireland, 8 <sup>th</sup> February 2024
31/05/2024 – 04/06/2024	<b>Hardy, J.</b> , Greer, R., Gurgenci, T., Kearney, A., Huggett, G., Good, P; Mater Research University of Queensland, Brisbane, Australia. A randomised, double-blind, controlled trial of medicinal cannabis vs placebo for symptom management in patients with advanced cancer receiving palliative care. ASCO 2024 Annual Meeting, Chicago, USA, 31 <sup>st</sup> May – 4 <sup>th</sup> June 2024. (Abstract 12020 - Hand-selected to be included in the 2024 Best of ASCO Annual Meeting program)
02/09/2024 – 04/09/2024	Kearney, A., <b>Hardy, J.</b> , Greer, R., Good, P. A randomised, dose escalated, double-blind placebo-controlled trial of medicinal cannabis for the palliation of symptoms of advanced cancer. Herston Health Precinct Symposium, Royal Brisbane & Women's Hospital, Herston, Australia, 2 <sup>nd</sup> – 4 <sup>th</sup> September 2024
05/09/2024 – 08/09/2024	Weerasinghe, A, D., Gurgenci, T., Greer, R., <b>Hardy, J.</b> , Good, P. A study into the benefit of 'standard palliative care' on symptom control in randomised controlled trials. Australia & New Zealand Society of Palliative Medicine (ANZSPM), Biannual Conference 2024, Adelaide, Australia, 5 <sup>th</sup> – 8 <sup>th</sup> September 2024. (Oral presentation)
05/09/2024 – 08/09/2024	Stokes, C., Huggett, G., Gurgenci, T., <b>Hardy, J.</b> , Good, P. Constructing a Qld palliative care research teletrial network. Australia & New Zealand Society of Palliative Medicine (ANZSPM), Biannual Conference 2024, Adelaide, Australia, 5 <sup>th</sup> – 8 <sup>th</sup> September 2024. (Oral presentation)
05/09/2024 – 08/09/2024	Good, P., Greer, R., Pelecanos, A., Kearney, A., Huggett, G., Gurgenci, T. & <b>Hardy, J.</b> A double-blind randomised controlled trial of dose-escalated cbd/thc oil for symptom management in advanced cancer. Australia & New Zealand Society of Palliative Medicine (ANZSPM), Biannual Conference 2024, Adelaide, Australia, 5 <sup>th</sup> – 8 <sup>th</sup> September 2024. (Oral presentation)
Poster Presentations	

27/06/2024-29/06/2024	Crichton, M., Warner, M., Law, L., Marshall, S., Nbu Tran, U., Tang, X., Isenring, E. & <b>Yates, P.</b> Ginger for chemotherapy-induced nausea and vomiting, fatigue, nutrition status, and quality of life: A systematic review update and meta-analysis. MASCC/AFSOS/ISOO Annual Meeting 2024, Lille, France, 27 <sup>th</sup> -29 <sup>th</sup> June 2024
27/06/2024-29/06/2024	<b>Yates, P.</b> & Liu, W.-H. Evaluation of the case management model of support for ovarian cancer care in Australia. MASCC/AFSOS/ISOO Annual Meeting 2024, Lille, France, 27 <sup>th</sup> - 29 <sup>th</sup> June 2024
21/07/2024-23/07/2024	Lee, J., Connolly, C., Daveson, B., Agar, M., Lovell, M., Phillips, J., Ritchie, M., Clark, K., <b>Yates, P.</b> , Aggarwal, A. & Currow, D. Moderate and severe pain is prevalent in people with prostate and urological cancer in the last week of life. ANZUP Annual Scientific Meeting, Gold Coast, Australia, 21 <sup>st</sup> – 23 <sup>rd</sup> July 2024
13/11/2024-15/11/2024	Legge, D.M., Langbecker, D.H. & <b>Yates, P.</b> Accommodating the diagnosis of low-grade glioma: An interpretive interview study. COSA's 51st Annual Scientific Meeting, Gold Coast, Australia, 13 <sup>th</sup> – 15 <sup>th</sup> November 2024
13/11/2024-15/11/2024	Bowers, A., Marshall, S., Dissanayaka, T., Marx, W., Gamage, E., Travica, N., Isenring, E., <b>Yates, P.</b> & Crichton, M. Should we prescribe medicinal cannabis improve appetite in people receiving cancer care? COSA's 51st Annual Scientific Meeting, Gold Coast, Australia, 13 <sup>th</sup> -15 <sup>th</sup> November 2024
03/05/2024	<b>Hardy, J.</b> Clinical studies of medicinal cannabis in palliative care. QHealth Research Excellence Showcase, Brisbane Conference Centre, Brisbane, Australia, 3 <sup>rd</sup> May 2024. (Poster presentation)
05/09/2024 – 08/09/2024	Good, P., Foster, K., Greer, R., Pelecanos, A., Kearney, A., Huggett, G., Gurgenci, T. & <b>Hardy, J.</b> Clinical studies of medicinal cannabis in palliative care – the development of a research program. Australian & New Zealand Society of Palliative Medicine (ANZSPM), Biannual Conference 2024, Adelaide, Australia, 5 <sup>th</sup> – 8 <sup>th</sup> September 2024. (Poster presentation)
05/09/2024 – 08/09/2024	Downs, G., Greer, R., Moses, G., Gurgenci, T., Good, P. & <b>Hardy, J.</b> Drug interactions in people on cannabidiol – is there cause for concern? Australian & New Zealand Society of Palliative Medicine (ANZSPM), Biannual Conference 2024, Adelaide, Australia, 5 <sup>th</sup> – 8 <sup>th</sup> September 2024. (Poster presentation)
05/09/2024 – 08/09/2024	Good, P., Foster, K., Greer, R., Oliveira, N., Vayne-Bossert, P., Ewing, A. & <b>Hardy, J.</b> Genomic variation in symptom expression in men with castrate resistant prostate cancer. Australian & New Zealand Society of Palliative Medicine (ANZSPM), Biannual Conference 2024, Adelaide, Australia, 5 <sup>th</sup> – 8 <sup>th</sup> September 2024. (Poster presentation)
<b>Other Presentations</b>	
20/03/2024	<b>Yates, P.</b> National and Statewide Palliative Care Projects. Palliative Care Queensland Online Webinar, 20 <sup>th</sup> March 2024
07/05/2024	<b>Yates, P.</b> Policy considerations for nurse leaders. Australian College of Nursing Nurse Executive Leadership Program, Sydney, Australia, 7 <sup>th</sup> May 2024
21/06/2024	<b>Yates, P.</b> (Panel Facilitator) Nursing perspectives: applications and impacts of digital innovation in the workplace. CNSA Congress 2024, Brisbane, Australia, 21 <sup>st</sup> June 2024
10/09/2024	<b>Yates, P.</b> Introduction to writing for publication. School of Nursing, National Defence Medical Center, (Virtual), Taipei, Taiwan, 10 <sup>th</sup> September 2024
24/09/2024	<b>Yates, P.</b> Writing the introduction, literature review and methods section. School of Nursing, National Defence Medical Center, (Virtual), Taipei, Taiwan, 24 <sup>th</sup> September 2024
01/10/2024	<b>Yates, P.</b> Writing the results. School of Nursing, National Defence Medical Center, (Virtual), Taipei, Taiwan, 1 <sup>st</sup> October 2024
15/10/2024	<b>Yates, P.</b> Policy – Considerations for nurse leaders. Australian College of Nursing Nurse Executive Leadership Program, Melbourne, Australia, 15 <sup>th</sup> October 2024
16/10/2024	<b>Yates, P.</b> Nursing in Palliative Care. Asia Pacific Hospice Palliative Care Network (APHN) Quarterly Webinar Series, 16 <sup>th</sup> October 2024
21/11/2024	<b>Yates, P.</b> Palliative Care. National Aged Care Alliance Meeting, Adelaide, Australia, 21 <sup>st</sup> November 2024
20/03/2024	<b>Hardy, J.</b> “How to run a RCT in palliative care”. Qld Palliative Care Advance Trainee education session, Virtual, Royal Brisbane and Women’s Hospital, Herston, Australia, 20 <sup>th</sup> March 2024
03/05/2024	<b>Hardy, J.</b> Clinical studies of medicinal cannabis in palliative care. (Poster presentation). QHealth Research Excellence Showcase, Brisbane Conference Centre, Brisbane, Australia, 3 <sup>rd</sup> May 2024
15/05/2024	<b>Hardy, J.</b> Medicinal cannabis – what is the evidence? Centre for Palliative Care Research and Education Webinar, Virtual, Royal Brisbane and Women’s Hospital, Herston, 15 <sup>th</sup> May 202
31/05/2024 – 04/06/2024	<b>Hardy, J.</b> , Greer, R., Gurgenci, T., Kearney, A., Huggett, G., Good, P; Mater Research University of Queensland, Brisbane, Australia. A randomised, double-blind, controlled trial of medicinal cannabis vs

	placebo for symptom management in patients with advanced cancer receiving palliative care. ASCO 2024 Annual Meeting, Chicago, USA, 31 <sup>st</sup> May – 4 <sup>th</sup> June 2024
05/08/2024	Good, P., <b>Hardy, J.</b> Medicinal cannabis for the palliation of symptoms of advanced cancer – final results. Mater Research lunchtime seminar, Mater Health Services, South Brisbane, Australia, 5 <sup>th</sup> August 2024
02/09/2024 – 04/09/2024	Kearney, A., <b>Hardy, J.</b> , Greer, R., Good, P. A randomised, dose escalated, double-blind placebo-controlled trial of medicinal cannabis for the palliation of symptoms of advanced cancer. Herston Health Precinct Symposium, Royal Brisbane & Women's Hospital, Herston, Australia, 2 <sup>nd</sup> – 4 <sup>th</sup> September 2024

# Herston Imaging Research Facility



**A/Professor Roslyn Francis**  
**Director**  
**Herston Imaging Research Facility (HIRF)**

Herston Imaging Research Facility (HIRF) is a research focused service, continuing to provide state-of-the-art infrastructure in MRI, PET/CT, PET/MR, 3D surface imaging (VECTRA WB360) and ultrasound imaging. It provides technical support on imaging protocols and analysis and research support for ethics and governance. HIRF is an alliance of RBWH/Metro North HHS, The University of Queensland and Queensland University of Technology. It is committed to i) implementing innovative and emerging imaging technologies to address unanswered clinical questions, ii) supporting clinical trials so that RBWH patients don't miss out on novel therapies, iii) being a conduit between basic research at our universities and real-world clinical questions.

HIRF welcomed a new Director in late 2024, Prof Roslyn Francis. Prof Francis is a Nuclear Medicine Physician with 20 years of experience. Prof Francis obtained her PhD in the UK, undertaking a Cancer Research UK Clinical Research Fellowship on antibody therapies. She has continued to pursue a combined clinical and research career, and has a particular interest in clinical trials in molecular imaging and therapy, and imaging analytics.

HIRF supported over 76 studies in 2024, resulting in 61 papers in high impact journals such as Blood, Lancet Oncology, and Nature Cancer.

In 2024, HIRF supported many RBWH-led and collaborative studies, including

- MRFF-funded studies into traumatic brain injury
- Novel diagnostic and staging tool for pancreatic cancer
- Exploring the use of a novel tracer as a diagnostic tool for amyotrophic lateral sclerosis (ALS)
- New staging tools for recently diagnosed high risk renal tumours
- Investigating new therapies in glioblastoma or brain cancer
- Assessing new treatments for emphysema.

HIRF also has a mission to support the development of the next generation of clinical researchers, through activities at the HDR, undergraduate and secondary high school levels.

## Research Awards and Achievements

Recipient (RBWH staff in bold)	Award	Event
<b>Associate Professor Matthew Roberts</b>	2024 Metro North Rising Star Award	Research Excellence Awards 2024



## Research Grants

Investigator Names (RBWH staff in bold)	RBWH Departments / Research Groups	Research Project Title	Granting Body	Total Awarded (whole all years)	Length of Awards in years and years active
--	---------------------------------------	---------------------------	---------------	--	---

All grants using HIRF are reported in the other department summaries.

## RBWH Department / Research Group Lead Research Activity

Lead Investigator Name (RBWH staff and consumers in bold)	Other Study Investigators (RBWH staff and consumers in bold)	Research Project Title	Consumer involvement	Number of RBWH Patients Recruited
---	--	---------------------------	-------------------------	--

HIRF is a research service centre and supports projects outside the department.

## Collaborative Research Activity Involving RBWH Department / Research Group

Lead Investigator Name (RBWH staff and consumers in bold)	Other Study Investigators (RBWH staff and consumers in bold)	Research Project Title	Consumer involvement	Number of RBWH Patients Recruited
<b>Owen Ung</b>	<b>Michael Wagels, Danielle Herbert, Aleks Edmundson</b>	Clinical trial evaluating medical-grade polycaprolactone-PCL breast scaffold implantation with autologous fat grafting for breast implant revision and congenital defect correction surgery (3D Breast Scaffold)	2	30
<b>Andrea McKittrick</b>	<b>Jason Brown, Aleks Edmundson, Mathilde Desselle, Marita Prior</b>	A feasibility study comparing 3D scanning technology and current standard of care when measuring limbs (3D Burns)	3	6
<b>Rob Henderson</b>	<b>Susan Heggie</b>	A Substudy of CD8 Positron Emission Tomography Imaging with <sup>89</sup> Zr-Df-crefmirlimab in Patients with Inclusion Body Myositis Administered ABC008 (ABC008 Myositis)	3	4
<b>Sally Campbell</b>	<b>Karen Dobell, Michelle Allan, Marita Prior</b>	Phase 3, open label, single arm study to evaluate efficacy and safety of FIX gene transfer with PF-06838435 (rAAV-Spark100-hFIX-Padua) in adult male participants with moderately severe to severe hemophilia B (Beigene)	3	5
<b>Zarnie Lwin</b>		Global Adaptive Trial Master Protocol: An International, Seamless Phase II/III Response Adaptive Randomization Platform Trial Designed To Evaluate Multiple Regimens In Newly Diagnosed and Recurrent Glioblastoma (GBM) (AGILE)	3	3
Melissa Fitzgerald, Fatimah Nasrallah	<b>Gary Mitchell</b>	A validation study to predict poor outcomes following mild traumatic brain injury (AUS-mTBI)	2	2
<b>Abigail Walker</b>	<b>Tanya Kairn, Philip Chan, Robyn Cheuk</b>	A Phase 2b, Randomized, Double-Blind, Placebo-Controlled, Multicenter Study of the Efficacy and Safety of Brensocatib in Participants with Chronic Rhinosinusitis Without Nasal Polyps (BIRCH)	3	1
<b>Trevor Gervais</b>	<b>Paul McEniery, Michael Schuetz, Michael O'Sullivan, James Powell, Silvia Manzanero, Katie McMahon, Nyoman Kurniawan</b>	Use of advanced magnetic resonance imaging to diagnose brachial plexus injuries and inform surgical intervention (Brachial Plexus)	3	1

Lead Investigator Name (RBWH staff and consumers in bold)	Other Study Investigators (RBWH staff and consumers in bold)	Research Project Title	Consumer involvement	Number of RBWH Patients Recruited
<b>Rachael Wilks</b>	<b>Tanya Kairn</b>	Design of a patient-matched vaginal applicator for brachytherapy treatments (Brachytherapy Pelvis)	3	3
<b>Maurice Wu</b>	<b>Craig Winter</b>	Use of Magnetic Resonance Diffusion Tensor Imaging in the Assessment of Nerve Roots in Cervical Radiculopathy Patients Undergoing Decompressive Surgery (Cervical Tractography)	3	10
<b>Zara Ioannides</b>		Cladribine: a multicenter Long-term efficacy Biomarker Australian Study (CLOBAS)	3	2
Michael Dickinson	Adrain Minson, John Seymour; <b>Nick Weber</b>	A multicentre, parallel arm, open-label trial of frontline R-CHOP/Pola-RCHP and glofitamab in younger, higher risk patients with diffuse large B cell lymphoma (COALITION)	3	17
<b>Jason Butler</b>	<b>Cameron Curley; Elango Subramonia Pillai; Glen Kennedy; Kirk Morris; Nicholas Weber; Simon Durrant; Siok Tey; Robyn Western</b>	A phase 3, randomised, double-blind, placebo-controlled, multicentre study of Bendamustine and Rituximab alone versus in combination with Acalabrutinib (ACP-196) in subjects with previously untreated mantle cell lymphoma. (Echo)	3	1
<b>Stewart Hunt</b>	<b>Scott Crowe</b>	Investigating the use of VECTRA technology for extracorporeal photopheresis in cutaneous T cell lymphoma patients (ECP for CTCL)	3	2
<b>Elizabeth Vujcich</b>	<b>Jason Brown, Michelle Donovan, Noah Betar</b>	Early versus Late Ablative CO2 Fractional Laser Treatment Evaluation (ELATE)	3	1
<b>William McGahan</b>	<b>David Pattison, Paul Thomas</b>	Applicability of Positron Emission Tomography using Gallium-68 labelled Fibroblast Activating Protein Inhibitor for the diagnosis, staging and treatment of pancreatic cancer (FAPI II Pancreas)	3	53
<b>Caroline McNamara</b>	<b>Jason Butler, Cameron Curly, Steve Lane, Kirk Morris, Ashleigh Scott, Nick Weber</b>	A Randomized Open-Label, Phase 3 Study to Evaluate Imetelstat (GRN163L) Versus Best Available Therapy (BAT) in Patients with Intermediate-2 or High-risk Myelofibrosis (MF) Refractory to Janus Kinase (JAK)-Inhibitor (Geron Imetelstat)	3	3
<b>David Pattison</b>	Andrew Scott	A Prospective, Multi-Centre Trial of TKI Redifferentiation Therapy in Patients with RAIR Thyroid Cancer (i-FIRST)	3	2
<b>Caroline McNamara</b>	<b>Renee Campbell</b>	A Phase 1, Open-Label, Multicenter Study of INCA033989 Administered as a Monotherapy or in Combination With Ruxolitinib in Participants With Myeloproliferative Neoplasms (INCYTE INCA 33989-101)	3	2
<b>Nicolas Weber</b>		An Open-Label, Randomized, Phase 3 Study of Linvoseltamab (REGN5458; Anti-BCMA X Anti-CD3 Bispecific Antibody) Versus The Combination Of Elotuzumab, Pomalidomide, and Dexamethasone (EPD), In Patients With Relapsed/Refractory Multiple Myeloma (LINKER-MM3)	3	6
<b>John Atherton</b>	<b>Leeanne Palethorpe</b>	A Phase 3b/4, Randomized, Double-blind, Placebo-controlled Clinical Study to Evaluate Mavacamten in Adults with Symptomatic Obstructive Hypertrophic Cardiomyopathy to Assess the Impact on Myocardial Structure with Cardiac Magnetic Resonance Imaging (MENTO)	3	1

Lead Investigator Name (RBWH staff and consumers in bold)	Other Study Investigators (RBWH staff and consumers in bold)	Research Project Title	Consumer involvement	Number of RBWH Patients Recruited
<b>Steve Lane</b>	<b>Gerlinda Amor &amp; Robyn Western</b>	A single arm, open label, signal seeking, phase II trial of the activity of Durvalumab in combination with Acalabrutinib in patients with high-grade B cell lymphoma (MoST-Lly)	3	2
<b>John O'Sullivan</b>	<b>Robert Adams, Jennie Roberts, Marc Agzarian, Katie McMahon, Paul Thomas, Pranav Sharma, Clare Berry, Marita Prior</b>	Validating Magnetic Resonance Diagnosis in Parkinson's Disease (PD Nigrosome)	3	14
<b>Adam Pearce</b>	<b>Matthew Roberts, David Pattison, Nattakorn Dhiantravan, Chun Loo Gan, David Brown, William Boews, Lee Jones</b>	ProspEctive comparison of PSMA PET CT vs FDG PET CT in staging of Renal Tumours. (PEPPER)	3	10
<b>Rebecca Murray</b>	<b>Louise Emmett, Phillip Stricker</b>	Is there a role for 3D anatomical models in tumour identification for urological cancer? (PRIMARY2)	3	9
<b>Nick Weber</b>		A randomised phase III trial with a PET response adapted design comparing ABVD +/- ISRT with A2VD +/- ISRT in patients with previously untreated stage IA/IIA Hodgkin lymphoma. (RADAR-CCS)	3	4
<b>Farzad Bashirzadeh</b>		CSP-11121: Endobronchial Thermal Liquid Ablation (ETLA) for the Treatment of Emphysema – A First in Human Study (REDUCE)	3	13
<b>Michael O'Sullivan</b>	<b>Robert Henderson, Melissa Latter</b>	Astrocyte Dysfunction and Glutamate Reuptake in Motor Neurone Disease: Investigation with the Novel PET Ligand RP-115 (RIO-EAAT2)	3	2
<b>John O'Sullivan</b>	Terrence O'Brien	A Phase 2 Randomised Controlled Trial of Sodium Selenate as a Disease Modifying Treatment for Probable Progressive Supranuclear Palsy (SEL003)	3	2
<b>Donald McLeod</b>		A Randomized, Double-Blind, Placebo-Controlled, Dose-Ranging Study to Evaluate the Efficacy and Safety of SPR001 (Tildacerfont) in Adult Subjects with Classic Congenital Adrenal Hyperplasia (Spruce 203 US Scrotal)	3	1
<b>Fatima Nasrallah</b>	<b>Craig Winter</b>	PREdiction and Diagnosis using Imaging and Clinical biomarkers Trial in Traumatic Brain Injury: the value of Magnetic Resonance Imaging (TBI-PREDICT)	3	9
<b>Simon Puttick /Stephen Rose</b>	<b>David Pattison, Paul Thomas</b>	Phase I/II Dose Escalation and Toxicity Study of <sup>212</sup> Pb-ADVC001 in Metastatic Prostate Adenocarcinoma (TheraPB)	3	4
<b>Andreas Obermair</b>		Feasibility of Groin Ultrasound to Predict Groin Lymph Node Involvement in Patients with Histologically Proven Vulvar Cancer (Vulval Cancer)	3	2
<b>Scott Crowe</b>	<b>Tanya Kairn</b>	VECTRA for RT: Evaluation of 3D scanning systems for radiotherapy	3	1

## Research Publications

### Authors

Investigator	ORCID ID	Investigator	ORCID ID
Scott Crowe	0000-0001-7028-6452	Michael O'Sullivan	0000-0002-2869-4580
Tanya Kairn	0000-0002-2136-6138	Rod Henderson	0000-0002-2820-8183
Paul Thomas	0000-0002-2420-0950	Craig Winter	0000-0003-4626-7280
Jennie Roberts	0000-0001-8296-6447	Owen Ung	0000-0002-5308-5605
David Pattison	0000-0001-9718-5598	Lizbeth Kenny	0000-0002-7556-0542
Matthew J Roberts	0000-0003-0552-7402	William McGahan	0000-0003-2897-6008
Melissa Latter	0000-0001-5382-9611	Anders Cervin	0000-0002-3427-4312
Bjorn Burgher	0000-0002-0115-0268	Gerard Byrne	0000-0001-8259-3812
Kiarash Khosrotehrani	0000-0002-6406-4076	John O'Sullivan	0000-0003-0422-8590
Ashleigh Scott	0000-0001-5574-6713	Rob Adam	0000-0003-0053-7919

### Publications in 2024

#### Journal Articles (RBWH staff or consumers in bold)

**Scott A, Lo A, Thompson K, Xia Y, Bodimeade H, Fazlollahi A, Curley C, Lane SW, Morris KL, McNamara CJ, Pillai ES, Weber N, Olivier Salvado, Katie L McMahon, Kennedy GA**; Prospective MRI and Neurocognitive Assessment of "Chemobrain" in Acute Myeloid Leukaemia: The Mineral Study. *Blood* 2023; 142 (Supplement 1): 5850. doi: <https://doi.org/10.1182/blood-2023-190301>

**de Nys, C.M., Liang, E.S., Prior, M.,** Woodruff MA, **Novak JI,** Murphy AR, Zhiyong L, **Winter CD,** Allenby MC. Time-of-Flight MRA of Intracranial Aneurysms with Interval Surveillance, Clinical Segmentation and Annotations. *Sci Data* 11, 555 (2024). <https://doi.org/10.1038/s41597-024-03397-8>

**Murugappan, K., Lakhani, S., Ung, O., Kenny, L., Thomas, P., Rezai, S., Niland, C.,** McMahon, K., and **Tran, S.** (2024). Evaluating the accuracy of 18F-FDG PET-MRI scan in detecting regional lymph node disease in high risk breast cancer patients: PETAL study. *The Breast*, Volume 74,103631, 2024. <https://doi.org/10.1016/j.breast.2023.103631>

**Griffiths MR, Pattison DA, Latter M,** Kuan K, Taylor S, Tieu W, Kryza T, Meyrick D, Lee BQ, Hansen A, Rose SE, Puttick SG. First-in-Human 212Pb-PSMA-Targeted  $\alpha$ -Therapy SPECT/CT Imaging in a Patient with Metastatic Castration-Resistant Prostate Cancer. *Journal of Nuclear Medicine*, 66(1), 2024, DOI: 10.2967/jnumed.123.267189

Emmett L, Subramaniam S, Crumbaker M, Nguyen A, Joshua AM, Weickhardt A, Lee ST, Ng S, Francis RJ, **Goh JC, Pattison DA,** Tan TH, Kirkwood ID, Gedye C, Rutherford NK, Sandhu S, Kumar AR, Pook D, Ramdave S, Nadebaum DP, Voskoboinik M, Redfern AD, Macdonald W, Krieger L, Schembri G, Chua W, Lin P, Horvath L, Bastick P, Butler P, Zhang AY, Yip S, Thomas H, Langford A, Hofman MS, McJannett M, Martin AJ, Stockler MR, Davis ID; ENZA-p Trial Investigators and the Australian and New Zealand Urogenital and Prostate Cancer Trials Group. [<sup>177</sup>Lu]Lu-PSMA-617 plus enzalutamide in patients with metastatic castration-resistant prostate cancer (ENZA-p): an open-label, multicentre, randomised, phase 2 trial. *Lancet Oncol.* 2024 May;25(5):563-571. doi: 10.1016/S1470-2045(24)00135-9. Epub 2024 Apr 12. PMID: 38621400

**Mehawed, G., Murray, R., Rukin, N.J. and Roberts, M.J.** (2024), Prostate tumour visualisation with PET: is image fusion with MRI the answer?. *BJU Int*, 133: 4-6. <https://doi.org/10.1111/bju.16335>

Emmett L, Papa N, Hope TA, Fendler W, Calais J, Burger I, Eiber M, Barbato F, Moon D, Counter W, John N, Xue A, **Franklin A,** Thompson J, Rasiyah K, Frydenberg M, Yaxley J, Buteau J, Agrawal S, Ho B, Nguyen A, Liu V, Lee J, Woo H, Hsiao E, Sutherland T, Perry E, Stricker P, Hofman MS, Kasivisvanathan V, Roberts M, Murphy D. Beyond Prostate Imaging Reporting and Data System: Combining Magnetic Resonance Imaging Prostate Imaging Reporting and Data System and Prostate-Specific Membrane Antigen-Positron Emission Tomography/Computed Tomography PRIMARY Score in a Composite (P) Score for More Accurate Diagnosis of Clinically Significant Prostate Cancer. *J Urol.* 2024 Aug;212(2):299-309. doi: 10.1097/JU.0000000000004010. Epub 2024 May 17. PMID: 38758680

Cheng M, Janzekovic J, Finze R, Mohseni M, Saifzadeh S, Savi FM, **Ung O, Wagels M,** Huttmacher DW. Conceptualizing Scaffold Guided Breast Tissue Regeneration in a Preclinical Large Animal Model. *Bioengineering.* 2024; 11(6):593. <https://doi.org/10.3390/bioengineering11060593>

Gonzalez-Martin A, Chung HC, Saada-Bouazid E, Yanez E, Senellart H, Cassier PA, Basu B, Corr BR, Girda E, Dicus C, Okpara CE, Ghari R, Jin F, Groisberg R, **Lwin Z.** Lenvatinib plus pembrolizumab for patients with previously treated advanced ovarian cancer: Results from the phase 2 multicohort LEAP-005 study. *Gynecologic Oncology*, Volume 186, 182 – 190



## Journal Articles (RBWH staff or consumers in bold)

Bruedigam, C., Porter, A.H., Song, A. Vroeg in de Wei, G, Stoll T, Straube J, Cooper L, Cheng G, Kahl VFS, Sobinoff AP, Ling VY, Jebaraj BMC, Janardhanan Y, Halder R, Bray LJ, Bullinger L, Heidel FH, **Kennedy GA**, Hill MM, Pickett HA, Abdel-Wahab O., Hartel G, **Lane SW**. Imetelstat-mediated alterations in fatty acid metabolism to induce ferroptosis as a therapeutic strategy for acute myeloid leukemia. *Nat Cancer* **5**, 47–65 (2024). <https://doi.org/10.1038/s43018-023-00653-5>

**Crowe SB, Cassim N, Luscombe J**, McMahon K, **Kairn T**. Monte Carlo calculation of total skin electron therapy dose using whole-body photogrammetry models. *Radiotherapy & Oncology*, 197(S1), S325-S32,7August 2024

Mehawed G, **Roberts MJ**, Bugeja J, Dowling J, **Stewart K**, **Gunasena R**, **Malczewski F**, **Rukin NJ**, **Murray R**. A Pilot Study of PSMA PET/CT and MRI Fusion for Prostate Cancer: Software to Replace PET/MRI Hardware. *Journal of Clinical Medicine*. 2024; 13(23):7384. <https://doi.org/10.3390/jcm13237384>

Hofman MS, Kasivisvanathan V, Link E, Buteau J, **Roberts MJ**, Francis RJ, Tang C, Vela I, **Thomas P**, Rutherford N, Martin JM, Frydenberg M, Shakher R, Wong LM, Taubman K, Ting Lee S, Hsiao E, Roach P, Nottage M, Kirkwood I, Hayne D, Iravani A, Williams S, O'Brien J, Lawrentschuk N, Murphy DG. Baseline Nodal Status on 68Ga-PSMA-11 Positron Emission Tomography/Computed Tomography in Men with Intermediate- to High-risk Prostate Cancer Is Prognostic for Treatment Failure: Follow-up of the proPSMA Trial. *Eur Urol Oncol*. 2024 Nov 28:S2588-9311(24)00251-7. doi: 10.1016/j.euo.2024.11.006. Epub ahead of print. PMID: 39613566

Buteau JP, Moon D, Fahey MT, **Roberts MJ**, Thompson J, Murphy DG, Papa N, Mitchell C, De Abreu Lourenco R, Dhillon HM, Kasivisvanathan V, Francis RJ, Stricker P, Agrawal S, O'Brien J, McVey A, Sharma G, Levy S, Ayati N, Nguyen A, Lee SF, **Pattison DA**, Sivarathnam D, Frydenberg M, Du Y, Titus J, Lee ST, Ischia J, Jack G, Hofman MS, Emmett L. Clinical Trial Protocol for PRIMARY2: A Multicentre, Phase 3, Randomised Controlled Trial Investigating the Additive Diagnostic Value of [68Ga]Ga-PSMA-11 Positron Emission Tomography/Computed Tomography in Men with Negative or Equivocal Multiparametric Magnetic Resonance Imaging for the Diagnosis of Clinically Significant Prostate Cancer. *Eur Urol Oncol*. 2024 Jun;7(3):544-552. doi: 10.1016/j.euo.2023.11.008. Epub 2023 Dec 6. PMID: 38061976

**McGahan W**, Gough M, Liu C, Hoyte S, Gill AJ, **Cavallucci D**; Australian Pancreatic Cancer Genome Initiative. Fibroblast Activation Protein Is Overexpressed on Both Stromal and Epithelial Cells Before Pancreatic Ductal Adenocarcinoma: Implications for Early Diagnosis on 68Ga-FAPI-PET/CT. *Gastroenterology*. 2024 Nov;167(6):1217-1220. doi: 10.1053/j.gastro.2024.06.033. Epub 2024 Jul 15. PMID: 39019407

**Roberts MJ, Yaxley JW**, Stranne J, van Oort IM, Tilki D. Is extended pelvic lymph node dissection REALLY required for staging of prostate cancer in the PSMA-PET era? *Prostate Cancer Prostatic Dis*. 2024 Mar 22. doi: 10.1038/s41391-024-00821-3. Epub ahead of print. PMID: 38519802

Kuan E, Vegh V, Phamnguyen J, O'Brien K, Hammond A, **Reutens D**. Language task-based fMRI analysis using machine learning and deep learning. *Front Radiol*. 2024 Nov 27;4:1495181. doi: 10.3389/fradi.2024.1495181. PMID: 39664795; PMCID: PMC11631583

Hofman MS, Emmett L, Sandhu S, Iravani A, Buteau JP, Joshua AM, **Goh JC, Pattison DA**, Tan TH, Kirkwood ID, Ng S, Francis RJ, Gedye C, Rutherford NK, Weickhardt A, Scott AM, Lee ST, Kwan EM, Azad AA, Ramdave S, Redfern AD, Macdonald W, Guminski A, Hsiao E, Chua W, Lin P, Zhang AY, Stockler MR, Williams SG, Martin AJ, Davis ID; TheraP Trial Investigators and the Australian and New Zealand Urogenital and Prostate Cancer Trials Group. Overall survival with 177Lu-PSMA-617 versus cabazitaxel in metastatic castration-resistant prostate cancer (TheraP): secondary outcomes of a randomised, open-label, phase 2 trial. *Lancet Oncol*. 2024 Jan;25(1):99-107. doi: 10.1016/S1470-2045(23)00529-6. Epub 2023 Nov 30. PMID: 38043558

Emmett L, Papa N, Counter W, Calais J, Barbato F, Burger I, Eiber M, **Roberts MJ**, Agrawal S, Franklin A, Xue A, Rasiah K, John N, Moon D, Frydenberg M, Yaxley J, Stricker P, Wong K, Coughlin G, Gianduzzo T, Kua B, Ho B, Nguyen A, Liu V, Lee J, Hsiao E, Sutherland T, Perry E, Fendler WP, Hope TA. Reproducibility and Accuracy of the PRIMARY Score on PSMA PET and of PI-RADS on Multiparametric MRI for Prostate Cancer Diagnosis Within a Real-World Database. *J Nucl Med*. 2024 Jan 2;65(1):94-99. doi: 10.2967/jnumed.123.266164. PMID: 38050155

Azad AA, Bressel M, Tan H, Voskoboinik M, **Suder A**, Weickhardt AJ, Guminski A, Francis RJ, Saghebi J, **Dhiantravan N**, Joshua AM, Emmett L, Horvath L, Murphy DG, Hsiao E, Balakrishnar B, Lin P, Redfern A, Macdonald W, Ng S, Lee ST, **Pattison DA**, Nadebaum D, Kirkwood ID, Hofman MS; UpFrontPSMA Study Team. Sequential [177Lu]Lu-PSMA-617 and docetaxel versus docetaxel in patients with metastatic hormone-sensitive prostate cancer (UpFrontPSMA): a multicentre, open-label, randomised, phase 2 study. *Lancet Oncol*. 2024 Oct;25(10):1267-1276. doi: 10.1016/S1470-2045(24)00440-6. Epub 2024 Sep 15. PMID: 39293461

Marwick TH, Dewar E, Nolan M, Shirazi M, Dias P, Wright L, Fitzgerald B, Kearney L, Srivastava P, **Atherton J**, Negishi K, Sverdllov AL, Wahi S, Otton J, Selvanayagam J, Thomas L, Thavendiranathan P. Strain surveillance during chemotherapy to improve cardiovascular outcomes: the SUCCOUR-MRI trial. *Eur Heart J*. 2024 Nov 7;45(41):4414-4424. doi: 10.1093/eurheartj/ehae574. PMID: 39217601; PMCID: PMC11542702

Tariq A, Pearce A, Rhee H, Kyle S, Raveenthiran S, Pelecanos A, Gan CL, Goh JC, Wong D, McBean R, Marsh P, Goodman S, Dungleison N, Esler R, Navaratnam A, Yaxley JW, **Thomas P, Pattison DA, Roberts MJ**. The Role of Prostate-specific Membrane Antigen Positron Emission Tomography/Computed Tomography in Primary Staging of Selected Renal Tumours: Initial Experience in a Multicentre Cohort. *Eur Urol Focus*. 2024 Sep;10(5):770-778. doi: 10.1016/j.euf.2023.12.004. Epub 2024 Jan 8. PMID: 38195354.

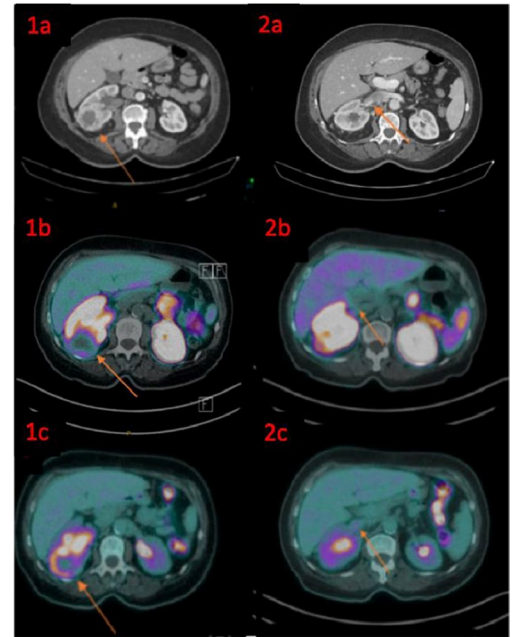


A non-invasive method using MRI to obtain motion-corrected lung images for early detection and intervention of paediatric lung disease.

Contrast Enhanced CT

PSMA PET

FDG PET



Prospective comparison of PSMA vs FDG PET/CT in staging of renal tumours – a pilot trial. CT (1a, 2a), PSMA PET (1b,2b) and FDG PET (1c,2c) for a patient with large right posterior renal mass. The mass is heterogenous on contrast CT, with mild PSMA avidity but intense FDG avidity.

# Jamieson Trauma Institute



**Professor Michael Schuetz**  
**Director**  
**Jamieson Trauma Institute**

## Research Highlights

The Jamieson Trauma Institute (JTI) is a collaborative hub of clinicians and researchers funded by Metro North Health and the Motor Accident Insurance Commission (MAIC). Our goal is to revolutionise injury prevention and transform trauma outcomes through education, quality improvement and knowledge translation.

2024 has been a pivotal year for JTI. In March, we launched a third video summarising JTI's vision, titled 'The Future of a Mass Casualty Response in Queensland,' at the JTI Showcase event. This year also marked the commencement of Prof Andrej Trampuz as Chair of Device Related Infection Management. Prof Trampuz, a renowned specialist and leading researcher in infectious diseases, has joined us in this role across JTI, RBWH, Queensland University of Technology (QUT) and the Herston Infectious Diseases Institute (HeIDI).

JTI has consolidated its role as a leader in eMobility research, with activities including emergency department data collection in collaboration with the Queensland Injury Surveillance Unit (QISU), a patient survey study recruiting nearly two hundred participants across four sites, and regular data insights for policy and advocacy. eMobility research findings, particularly regarding private vs. public scooter profiles, have gained significant media and government attention. In addition, a new study in collaboration with Queenslanders with Disability Network, Griffith University, QUT, and The University of Queensland has received funding to map Queensland's disability community and design innovative strategies to increase accessibility and inclusivity in sport.

Data-driven and patient-centred research are key elements of JTI's mission. JTI has developed two groundbreaking platforms, the Queensland Injury Atlas and iTRAQI, to visualise injury data across Queensland, which have progressed to validation and stakeholder consultation. Thanks to new funding secured from MAIC, these two platforms will be combined with a data analytics environment to deliver key information to clinical and policy decision-makers. A collaboration with STARS Rehabilitation Engineering Centre has increased understanding of needs, demand, and opportunities in rehabilitation technology, informing an innovative program of research for technology integration, transdisciplinary care, and data-driven outcomes, also funded by MAIC.

Buddhi Herath, the first recipient of a JTI PhD scholarship, graduated with a nomination for an Outstanding Doctoral Thesis Award. His research advanced implant design for the treatment of large bone defects, earning him authorship in a patent and industry collaborations. Two new students have commenced their PhD journeys, one focusing on community opioid dispensing following injury, and the other on leading-edge film-making approaches for trauma recovery.

JTI researchers have published 49 peer-reviewed manuscripts, with two-thirds in top-tier journals, and delivered 80 presentations at national and international forums. To advance research translation in trauma care, JTI recently hosted the Trauma Care in Regional, Rural and Remote Queensland Symposium in partnership with the Emergency Medicine Foundation. JTI members led eight successful grant proposals valued at nearly 2.8 million dollars.



In summary, 2024 has been a transformative year for JTI. Our collaborative efforts have advanced trauma research and injury prevention, fostering partnerships and innovation. We remain committed to advancing trauma care, improving trauma outcomes, and achieving more impacting results in the years to come.



## Research Awards and Achievements

Recipient (RBWH staff in bold)	Award	Event
<b>Kirsten Vallmuur</b>	Australian Injury Prevention Network Special Award for Sustained Achievement in Injury Prevention	15th Australasian Injury Prevention & Safety Promotion Conference, Rotorua
<b>Daniel Johnson Brimm</b>	One of four registrars' papers selected for presentation	2024 AOA Queensland Branch Registrar Papers Day and QORF Collaborative MSK Research Meeting
<b>Susanna Cramb</b>	QLD women in STEM Judges' Award	Queensland Museum in collaboration with the Queensland Government through the Department of Environment, Science and Innovation and the Office for Women
<b>Samantha Borg</b>	2024 The Hopkins Centre Early Career Researcher Award	The Hopkins Centre's Bold Ideas Better Solutions Symposium

## Research Grants

Investigator Names (RBWH staff in bold)	RBWH Departments / Research Groups	Research Project Title	Granting Body	Total Awarded (whole all years)	Length of Awards in years and years active
Fatima Nasrallah, Cliff Pollard, <b>Craig Winter, Dylan Flaws, Esther Jacobson, Gary Mitchell, Jacelle Warren, Judith Bellapart</b> , Katie McMahon, Maria Hennessy, Mark Midwinter, <b>Michael O'Sullivan, Michael Reade</b> , Michael Redmond, <b>Michael Schuetz, Nathan Brown</b> , Patrick Donnelly, Paul Thomas, Rachael Brown, <b>Silvia Manzanero</b> , Trevor Russell, Victoria McCreanor	Jamieson Trauma Institute, Neurosurgery, Mental Health, Emergency and Trauma Centre, Intensive Care, Neurology	PREDICT-TBI - PREdiction and Diagnosis using Imaging and Clinical biomarkers Trial in Traumatic Brain Injury: the value of Magnetic Resonance Imaging	Motor Accident Insurance Commission	\$1,490,687	3 years, 2021-2024
Mark Daniel, Gavin Turrell, S Suzanne Carroll, Margaret Cargo, K Shuvo Bakar, Luis Salvador-Carulla, A Taylor, Yogi Vidyattama, Nasser Bagheri, <b>Susanna Cramb</b>	Jamieson Trauma Institute	Novel modelling to improve decision-making for neighbourhood design to reduce chronic disease risk	NHMRC Ideas grant	\$901,564	4 years, 2021-2025



Investigator Names (RBWH staff in bold)	RBWH Departments / Research Groups	Research Project Title	Granting Body	Total Awarded (whole all years)	Length of Awards in years and years active
Marie-Luise Wille, Dietmar Hutmacher, Sinduja Suresh, Mohit Chhaya, Navid Khani, Markus Laubach, Boris Holzapfel, Michael Wagels, Paige Little, <b>Beat Schmutz</b> , <b>Michael Schuetz</b>	Jamieson Trauma Institute	An Innovative 3D Printed Patient-Specific Bone Scaffold Design for the Treatment of Large Volume Bone Defects	Clive & Vera Ramaciotti Foundation & QUT	Clive & Vera Ramaciotti Foundation \$100,000 & QUT \$30,000	3 years, 2021-2024
<b>Susanna Cramb</b>	Jamieson Trauma Institute	PLACE (Prioritising Location-based Analysis and Consumer Engagement) for Change	NHMRC Emerging Leadership 1 Investigator Award	\$575,740	4 years, 2022-2026
<b>Shaun O'Leary</b> , Nadine Foster, <b>Gary Mitchell</b> , <b>Tanya Smyth</b> , <b>Jacelle Warren</b> , Tracy Comans, Gustavo Machado, <b>Panos Barlas</b> , <b>Michelle Cottrell</b> , <b>Janelle Heine</b> , William See	Physiotherapy, Emergency and Trauma Centre, Jamieson Trauma Institute	Reducing Inappropriate Medications for low back pain in the Emergency department (RIME): a controlled interrupted time-series implementation study	HCF Research Foundation Translational Research Grants	\$289,316	3 years, 2022-2025
Luise Cullen, William Parsonage, Laura Stephensen, Ray Mahoney, Jaimi Greenslade, Zephania Tyack, <b>Susanna Cramb</b> , Victoria McCreanor, Derek Chew, Andrea McKivett, Abdul Rahman Ihdahid, Gemma Figtree, Graham Hillis, Gregory Starmer, Andrew Goodman	Emergency and Trauma Centre, Jamieson Trauma Institute	Clinical and health economics implications of routine CTCA for emergency department assessment of Aboriginal and Torres Strait Islander people at risk of acute coronary syndrome	Medical Research Future Fund Cardiovascular Health Mission	\$1,488,687.70	2 years, 2023-2025
<b>Jacelle Warren</b>	Jamieson Trauma Institute	Long term burden and cost to the health care system for treatment of injury following transport crashes	RBWH and RBWH Foundation Postgraduate Scholarship renewal	\$39,633	1 year, 2023-2024
<b>Kirsten Vallmuur</b> , <b>Gary Mitchell</b> , <b>Brett Droder</b> , <b>Esther Jacobson</b> , Rob Eley, Martin Wullschleger, Luke Lawton, Vinay Gangathimmaiah, Graeme Maw	Jamieson Trauma Institute, Emergency and Trauma Centre	Electric personal MObility DEvices Surveillance (E-MODES) Patient Survey Study	RACQ and RBWH Foundation	\$200,000	2 years, 2022-2024
Camila Shirota, Catherine Cave, Jacqui Mitchell, <b>Alejandro Melendez-Calderon</b> , Waydy Mitchell, Ryan Bell	Jamieson Trauma Institute	EPIC-Tech: Engineering and Physiotherapy Interdisciplinary Collaboration with Technology - exploration of a transdisciplinary approach to allied health services at the PAH	Hopkins Centre Seed Funding 2023	\$39,985	1 year, 2023-2024
<b>Frances Williamson</b> , Kate Thompson, Christina Parker, Damian Candusso, Lori Lockyer, <b>Michael Muller</b> , Gavin Winter, Thom Saunders, Michelle Dodds	Jamieson Trauma Institute, Emergency and Trauma Centre, Trauma Service	Can interactive online learning using enhanced technology adequately teach trauma-based procedural skills to emergency nursing clinicians?	Emergency Medicine Foundation	\$97,469	1 year, 2024-2025

Investigator Names (RBWH staff in bold)	RBWH Departments / Research Groups	Research Project Title	Granting Body	Total Awarded (whole all years)	Length of Awards in years and years active
<b>Jacelle Warren, Kirsten Vallmuur</b>	Jamieson Trauma Institute	Harnessing the power of participant goals: eliciting quantifiable themes	NIISQ Research and education project concept proposal	\$16,908	1 year, 2024-2024
<b>Kirsten Vallmuur</b> , Kelly Purser, Laurie Buys, Ioni Lewis, Alan Abrahams, James Harrison, Helen Badge	Jamieson Trauma Institute	Addressing significant product safety knowledge gaps for older Australians	Australian Research Council Discovery Projects	\$533,965	3 years, 2024-2026
<b>Michael Schuetz</b> , Michael Verhofstad, Michael Raschke, Ian Civil, Theodore Miclau, Belinda Gabbe	Jamieson Trauma Institute	Development of a global outcome measure for trauma	AO innovation funding	\$75,000 CHF	2 years, 2024-2025
Elizabeth Wake, Jessica Forbes, Andrea Marshall, Jamie Ranse, Don Campbell, Gerben Kjeizers, Melissa Harris, Martin Wullschleger, <b>Shahera Banu</b> , Shane George	Jamieson Trauma Institute	Revision of the GCHHS Trauma Activation System: an implementation, evaluation and knowledge translation study	Gold Coast Health Collaborative Research Grant Scheme 2023	\$93,029	2 years, 2024-2025
Lisa Anemaat, Jennifer Muller, Gail Robinson, David Copland, Emma Doig, <b>Michael O'Sullivan</b> , <b>Adrienne Young</b> , <b>Tanya Smyth</b> , <b>Silvia Manzanero</b> , Danielle Herbert, Diana Tam, Jessica Schults, Karina Charles, Rachel Latimore	Jamieson Trauma Institute, Nutrition and Dietetics, Research Services,	Transforming person-centred care through quality consumer and community involvement in research	RBWH Foundation	\$49,747	1 year, 2024-2025
<b>Panos Barlas</b> , <b>Tanya Smyth</b> , <b>Janelle Heine</b> , Shaun O'Leary	Jamieson Trauma Institute, Physiotherapy, Emergency and Trauma Centre	Exploring patient's experience of receiving care for acute low back pain in the emergency department	RBWH Foundation	\$35,199	1 year, 2024-2025
Patrick Asare, <b>Clifford Afoakwah</b> , Bright Ahinkorah, Alexandra McCarron, Sebastian Sterling	Jamieson Trauma Institute	Effectiveness of Zinc Supplementation in Respiratory Infections in COPD Patients: A Randomised Controlled Trial	Medical Research Future Fund - Early to Mid-Career Researchers Initiative	\$990,064	2 years, 2024-2026
<b>Michael Schuetz</b> , <b>Shahera Banu</b> , <b>Jacob O'Gorman</b> , Shaun Francis, Elizabeth Doran, <b>Beat Schmutz</b> , <b>Brett Droder</b> , <b>Clifford Afoakwah</b>	Jamieson Trauma Institute, Emergency and Trauma Centre	Integrating drone solutions into the Royal Flying Doctor Service (Queensland Section)'s medical chest service to address health disparities in underserved communities.	Amazon Web Services Health Equity Grant	AWS Promotional Credits valued at US\$ 228,438	2 years, 2024-2026
Camila Shirota, Catherine Cave, Jacqui Mitchell, <b>Alejandro Melendez-Calderon</b> , Waydy Mitchell, Ryan Bell	Jamieson Trauma Institute	EPIC-Tech: Engineering and Physiotherapy Interdisciplinary Collaboration with Technology - exploration of a transdisciplinary approach to allied health services at the PAH	The Hopkins Centre 2023 Interdisciplinary Seed Funded Research Grants	\$39,985	2 years, 2024-2025

## RBWH Department / Research Group Led Research Activity

Lead Investigator Name (RBWH staff and consumers in bold)	Other Study Investigators (RBWH staff and consumers in bold)	Research Project Title	Consumer involvement	Number of RBWH Patients Recruited
<b>Cate Cameron</b>	Bill Loveday, <b>Kirsten Vallmuur</b> , Victoria McCreanor, Melanie Proper, <b>Jacelle Warren</b> , Cliff Pollard, Nick Graves, <b>Susanna Cramb</b> , <b>Shahera Banu</b> , <b>Samantha Borg</b> , <b>Tasmiah Sad Sutopa</b> , <b>Frances Williamson</b>	CODI – Prevalence and patterns of opioid use pre- and post-trauma in Queensland: population-based data linkage study	Not applicable	Data from over 600,000 admissions Qld-wide
<b>Kirsten Vallmuur</b>	Angela Watson, Paul Taylor, Michael Clacher, Sebastian Bielen, Andrew Currie, <b>Cate Cameron</b> , <b>Jacelle Warren</b> , Victoria McCreanor	CLAIMS – Feasibility, requirements, and value of data linkage of motor vehicle accident compensation, workers compensation and health data in Queensland	Consultation	Data from over 1 million records Qld-wide
<b>Kirsten Vallmuur</b>	<b>Gary Mitchell</b> , <b>Brett Droder</b> , <b>Esther Jacobson</b> , Rob Eley, Martin Wullschleger, Luke Lawton, Vinay Gangathimmaiah, Graeme Maw	Electric personal MObility DEvices Surveillance (E-MODES) Patient Survey Study	Involvement	51
<b>Panos Barlas</b>	<b>Michael Schuetz</b> , <b>Esther Jacobson</b> , <b>Alejandro Melendez-Calderon</b>	SMART-Ankle: Streamlining Management And Rehabilitation with Technology for Ankle fractures	Involvement	0
<b>Kirsten Vallmuur</b>	<b>Jacelle Warren</b> , <b>Jesani Catchpoole</b> , Donna Truran, Ming Zhang, Michael Lawley, <b>Genevieve Westacott</b>	ITAAR – SNOMED-ICD interoperability and mapping project: Injury Terminology Aware Analytics and Reporting	Not applicable	Methodological study – does not involve patient recruitment
<b>Beat Schmutz</b>	Marie-Luise Wille, Paige Little, <b>Buddhi Herath</b> , Dietmar Hutmacher	Best work practise for the manufacturing of patient specific 3D printed scaffolds (for critical size bone defects) – Improved workflow with opensource software.	Not applicable	Use of data from existing databases – does not involve patient recruitment
<b>Beat Schmutz</b>	Husain Tabassum, Paige Little, Andrew Fielding, Andreas Petersik, Heiko Gottschling, Manuel Schroeder	Virtual Automated Anatomical 3D Alignment of Bone Fragments – Solving the Fracture Puzzle	Not applicable	Use of data from existing databases – does not involve patient recruitment
<b>Beat Schmutz</b>	Andreas Kouzelis, <b>Frances Williamson</b> , <b>Gary Mitchell</b> , <b>Michael Schuetz</b> , <b>Silvia Manzanero</b>	Patient-specific pelvic and acetabular fracture classification using Artificial Intelligence	Not applicable	127 CT scans
<b>Beat Schmutz</b>	Marco Zucchet, Cristiano Pizzamiglio	Femur Morphometric Analysis	Not applicable	Use of data from existing databases – does not involve patient recruitment
<b>Frances Williamson</b>	Victoria McCreanor, Zephania Tyack, Martin Wullschleger, <b>Jacelle Warren</b> , <b>Michael Handy</b> , Steven McPhail	Value-based trauma care: understanding the cost, effect and implementation of an innovative specialist-led multidisciplinary trauma admitting service	Involvement	Data from 7,883 Trauma Service patients

Lead Investigator Name (RBWH staff and consumers in bold)	Other Study Investigators (RBWH staff and consumers in bold)	Research Project Title	Consumer involvement	Number of RBWH Patients Recruited
<b>Beat Schmutz</b>	<b>Ashish Wadhawan, Michael Schuetz, Kevin Tetsworth,</b> Jason Dowling, Pierrick Bourgeat, Jorgen Fripp, <b>Frances Williamson, Gary Mitchell</b>	Development of an Artificial Intelligence screening system to identify patients requiring a CT scan following distal radius fractures	Not applicable	525 x-rays
<b>Kirsten Vallmuur</b>	<b>Susanna Cramb,</b> Victoria McCreanor, Thom Saunders	Queensland Injury Atlas: beta release	Consultation	Development study – does not involve patient recruitment
<b>Jacelle Warren</b>	Clinton Gibbs, <b>Kirsten Vallmuur, Susanna Cramb,</b> Adam Rolley, Alan Woodley, <b>Gary Mitchell,</b> Angela Watson, Rex Parsons, Christopher Hayden	iTRAQI – Applications of a novel neurosurgical service accessibility index to improve emergency care of people sustaining a road trauma-related TBI in Qld	Consultation	Development study – does not involve patient recruitment
<b>Beat Schmutz</b>	Padden Jones, Hiro Minehara	Effect of age, ethnicity, and sex on the anatomical fitting of the LCP Distal Femur plate	Not applicable	Use of data from existing databases – does not involve patient recruitment
<b>William Steadman</b>	<b>Paul Chapman, Thomas Kelly, Gerrit Van de Pol,</b> Steve Wallis, Menino Cotta, <b>Jeffrey Lipman, Bonnie Woods, Silvia Manzanero, Andrew Foster</b>	Antibiotic exposure at site of orthopaedic device-related infections - A pilot observational study	Involvement	5
<b>Andrej Trampuz</b>	<b>Paul Chapman, Michael Schuetz, Beat Schmutz, Kevin Tetsworth, Bonnie Woods, Jason Brown, Brett Droder, Arpita Das</b>	Design and development of a gamified app to improve patient engagement and compliance with treatment plan	Consultation	0
<b>Alejandro Melendez-Calderon</b>	Sandy Brauer, Paul Hodges, Trevor Russell, Sivakumar Balasubramanian, Chelsea Dobbins, Robyn Lamont, Kate Regnault, Jonathan Hadwen	Open-source eHealth platform for generalised data collection	Not applicable	Development study – does not involve patient recruitment
<b>Jeffrey Lipman</b>	Timothy Hardcastle, <b>Elizabeth Studley,</b> Martin Wullschleger, <b>Carl Lise, Silvia Manzanero, Olivia Zheng,</b> Jonathan Ko, Victor Kong, Damian Clark	Comparison of trauma systems between Queensland and KwaZulu-Natal province (South Africa)	Involvement	Data from 2305 patients extracted from the RBWH Trauma Service Database
<b>Alejandro Melendez-Calderon</b>	Camila Shirota, Denny Giguere, Justin Fong, Hang Chung Ling	Enhancing neurorehabilitation and functional recovery after brain and spinal cord injury with robots, AI and co-design	Not applicable	Development study – does not involve patient recruitment
<b>Michael Schuetz</b>	Peter Choong, Fiona Wood, Andrej Trampuz, <b>Kevin Tetsworth, Jason Roberts,</b> Stephen McPhail, <b>Andrew Foster,</b> Sina Babazadeh, Michelle Dowsey, Yangqi Xu, Emma Choong, <b>Paul Chapman, William Steadman, Brianna Rainnie,</b> Danika Jurat, B Sandeep, <b>Silvia Manzanero</b>	Scoping reviews on outcomes from infection in orthopaedic surgery, trauma and burns	Not applicable	Literature reviews – do not involve patient recruitment
<b>Jacelle Warren</b>	<b>Kirsten Vallmuur,</b> Joy Wang, Eloise Hummell	Harnessing the power of participant goals: eliciting quantifiable themes	Involvement	No recruitment at RBWH

Lead Investigator Name (RBWH staff and consumers in bold)	Other Study Investigators (RBWH staff and consumers in bold)	Research Project Title	Consumer involvement	Number of RBWH Patients Recruited
<b>Frances Williamson</b>	Kate Thompson, Christina Parker, Damian Candusso, Lori Lockyer, <b>Michael Muller</b> , Gavin Winter, Thom Saunders, Michelle Dodds	Can interactive online learning using enhanced technology adequately teach trauma-based procedural skills to emergency nursing clinicians?	Not applicable	Data from RBWH staff
<b>Kirsten Vallmuur</b>	Catherine Niven, Kelly Purser, Laurie Buys, Ioni Lewis, Alan Abrahams, James Harrison, Helen Badge	Addressing significant product safety knowledge gaps for older Australians	Consultation	No recruitment at RBWH
<b>Stephen Butler</b>	<b>Trevor Gervais, Michael Schuetz</b> , Katie McMahon, <b>Michael O'Sullivan, Robert Henderson</b> , Nyoman Kurniawan, Jin Jin, James Powell, <b>Esther Jacobson</b>	Use of advanced magnetic resonance imaging to diagnose brachial plexus injuries and inform surgical intervention	Involvement	2
<b>S Cramb</b>	A Cook, L Glance, R Lyons, A Walters, J Lauritsen, R Swindall, J Harrison, B Gabbe, T Osler, <b>K Vallmuur, J Warren, C Afoakwah</b>	Expanding the Trauma Mortality Prediction Model to use with non-USA International Classification of Diseases codes	Not applicable	Development study – does not involve patient recruitment
<b>C Cameron</b>	Robert Eley, Roisin O'Neill, Michael Handy, <b>E Jacobson</b> , Zach Nightingale	After P.A.R.T.Y. (Prevention of Alcohol and Risk Related Trauma in Youth) Booster Study	Partnership	0

## Collaborative Research Activity Involving RBWH Department / Research Group

Lead Investigator Name (RBWH staff and consumers in bold)	Other Study Investigators (RBWH staff and consumers in bold)	Research Project Title	Consumer involvement	Number of RBWH Patients Recruited
Adam Mahoney	<b>Michael Reade, Kirsten Vallmuur, Cate Cameron</b> , Kerrie Mengerson	The spatial epidemiology of trauma in Queensland	Not applicable	Queensland-wide data
<b>Anthony Holley</b>	<b>Brett Droder, Jeremy Cohen, Jeffrey Lipman, Michael Reade, Kirsten Vallmuur</b>	The development of an Australasian burns critical care registry	Not applicable	0
Zemedu A Ferede	<b>Michael Schuetz, Justin Kenardy, Beat Schmutz</b> , Dylan Flaws	Predicting and improving longer term outcomes of Post-Intensive Care Syndrome	Not applicable	0
Fatima Nasrallah	David Reutens, Shekhar Chandra, James Walsham, Trevor Russell, Sandeep Bhuta, Jason Ross, <b>Craig Winter</b> , Siva Senthuran, <b>Judith Bellapart, Cliff Pollard, Jacelle Warren, Victoria McCreanor</b>	PREDICT-TBI: PREdiction and Diagnosis using Imaging and Clinical biomarkers Trial in Traumatic Brain Injury	Partnership	14
Luke Visscher	Anjali Prakash, Ross Crawford, <b>Michael Schuetz, Beat Schmutz</b>	Can statistical shape modelling of population variation in bony anatomy be used to improve orthopaedic surgery outcomes in terms of implant design and surgical planning compared to the standard	Not applicable	Use of data from existing databases – does not involve patient recruitment
Terra Bredy	Celeste Glasgow, <b>Jennifer Strong</b> , Sue Laracy, Freyr Patterson, Jennifer Fleming – Project funded by JTI	Enhancing occupational performance in orthopaedic trauma patients with distal radial fractures	Involvement	0



Lead Investigator Name (RBWH staff and consumers in bold)	Other Study Investigators (RBWH staff and consumers in bold)	Research Project Title	Consumer involvement	Number of RBWH Patients Recruited
Simon Platt	<b>Beat Schmutz</b> , James Wheeler, Philipp Loesl, Yohan Schmutz-Leong, Benjamin Huang	A volumetric analysis of the posterior malleolus segment in supination external rotation type 4 ankle fractures	Not applicable	Use of data from existing databases – does not involve patient recruitment
Martha Druery	<b>Cate Cameron, Jacelle Warren</b> , Michael Waller, Danielle Ford, <b>Arpita Das</b> , Xylyss Lyon, Julia Wood	Factors affecting psychosocial and physical outcomes after major burn injuries in adults	Involvement	Data from 274 patients from the Professor Stuart Pegg Adult Burns Centre
Chiara Santomauro	Mia McLanders, Cliff Pollard, <b>Sarah Pearce</b> , Drew Rae, Penelope Sanderson	Improving emergency trauma care for rural, regional and remote Queenslanders	Not applicable	Participants are medical students
Shaun O'Leary	Nadine Foster, <b>Gary Mitchell, Tanya Smyth, Jacelle Warren</b> , Tracy Comans, Gustavo Machado, <b>Panos Barlas, Michelle Cottrell, Janelle Heine</b> , William See	Reducing Inappropriate Medications for low back pain in the Emergency department (RIME): a controlled interrupted time-series implementation study	Not applicable	1143
Mark Elcock	Clinton Gibbs, <b>Kirsten Vallmuur, Jacelle Warren, Shahera Banu</b> , Jahnvi Burnham	Developing and implementing a framework for evaluating the impact of the COVID-19 pandemic on Qld's aeromedical retrieval service network operation, performance, and outcomes to inform future preparedness	Not applicable	Retrieval Services Queensland data
Samantha Borg	<b>Cate Cameron</b> , Victoria McCreanor, Steven McPhail	Prevalence, health service encounters and economic burdens associated with opioid use in adult spinal cord injury populations	Involvement	Queensland-wide data
Dylan Flaws	Sue Patterson, <b>Michael Handy</b>	UR-TOPIC – Understanding Recovery and Tracking Outcomes of Post Intensive Care	Involvement	20
Belinda Dow	Debbie Long, Alexandra De Young, <b>Justin Kenardy</b>	Feasibility of an early intervention to prevent persistent traumatic stress reactions in young children admitted to intensive care	Consultation	Recruitment at Queensland Children's Hospital
Benjamin Powell	<b>Anthony Lynham</b> , Mark Midwinter, <b>Susanna Cramb</b>	Predicting in-flight hypotension in aeromedical trauma patients	Not applicable	Recruitment at LifeFlight
<b>Elizabeth Studley</b>	<b>Kirsten Vallmuur, Michael Schuetz</b> , Belinda Gabbe, <b>Adam Mahoney</b>	Trauma outcomes comparison between different trauma systems in Australia. Comparison of trauma systems between states of Queensland, Tasmania, and Victoria	Involvement	State-wide data
Binuri Perera	<b>Susanna Cramb, Kirsten Vallmuur, Kevin Laupland</b>	Geographic variations in sepsis across Queensland	Not applicable	Queensland-wide data
<b>Lucas Wheatley</b>	<b>Michael Rudd, Perry Cleland, Jacelle Warren</b>	Cutaneous and radiological seatbelt signs indicating hollow viscus injury	Not applicable	Data from 111 patients extracted from the RBWH Trauma Service Database

Lead Investigator Name (RBWH staff and consumers in bold)	Other Study Investigators (RBWH staff and consumers in bold)	Research Project Title	Consumer involvement	Number of RBWH Patients Recruited
Kavya Venkatesh	Alison Cutler, Martin Wullschleger, Aparna Arjunan, Joseph Tan, <b>Shalisa Maisrikrod, Jacelle Warren</b>	Evaluation of the characteristics and outcomes of geriatric trauma patients admitted to the ICU	Not applicable	Data from 8,225 admitted patients
Camila Shiota	Catherine Cave, J Mitchell, <b>Alejandro Melendez-Calderon</b> , Waydy Mitchell, Ryan Bell	EPIC-Tech: Engineering and Physiotherapy Interdisciplinary Collaboration with Technology – exploration of a transdisciplinary approach to allied health services at PAH	Partnership	27 patients at Princess Alexandra Hospital
Elizabeth Wake	Jessica Forbes, Andrea Marshall, Jamie Ranse, Don Campbell, Gerben Kjeizers, Melissa Harris, Martin Wullschleger, <b>Shahera Banu</b> , Shane George	Revision of the GCHHS Trauma Activation system: an implementation, evaluation and knowledge translation study	Not applicable	Conducted at Gold Coast University Hospital, participants are clinicians
Lisa Anemaat	David Copland, Nadine Foster, Emmah Doig, <b>Jennifer Muller</b> , Ciara Shiggins, <b>Michael O'Sullivan</b> , Gail Robinson, <b>Adrienne Young, Jessica Schults, Silvia Manzanero</b> , Mathilde Desselle, Karina Charles, <b>Tanya Smyth</b> , Diana Tam, Rachel Latimore	Transforming person-centred care through quality consumer and community involvement (CCI) in research	Partnership	14 consumers and 36 researchers/clinicians across Metro North Health
Peter Slattery	<b>Alejandro Melendez Calderon</b> , Oliver Manson, Stephanie Fountain, <b>Silvia Manzanero, Brett Droder</b> , Vikram Joshi, Haylee Kajewski, Brooke Wadsworth	Surveying demand and areas of opportunity for Rehabilitation Engineering services	Not applicable	0
Helena Franco	Eric Donadson, Yvana Toh, <b>Clifford Afoakwah, Julie Vermeir</b>	The Health Economic impact of the Stryker Mako Robot for primary total hip replacement and total knee replacement: A single centre experience	Partnership	0
Isaac Oancea	Joe Carter, Maria Zelenskaya, Mark Ryan, <b>Kirsten Vallmuur</b>	Interactive virtual reality filmmaking for trauma recovery: a new approach to narrative therapy	Not applicable	0
Jay Pickard	Esben Strodl, Luke Ney, <b>Tanya Smyth</b> , Caitlin Vayro, Mark Harvey	The police perspective in responding to mental crises and the potential personal impacts	Not applicable	0

## Research Activity with a Specific Focus on Aboriginal and Torres Strait Islander Peoples

Lead Investigator Name (RBWH staff and consumers in bold)	Other Study Investigators (RBWH staff and consumers in bold)	Research Project Title	Number of RBWH Patients Recruited
<b>Genevieve Westacott</b>	<b>Geoffrey Binge</b> , Kim Vuong, Michelle Allen, <b>Susanna Cramb</b> , Shannon Dias, <b>Arpita Das, Silvia Manzanero</b> , Victoria McCreanor	Research co-production with First Nations Australians: informing emergency and injury-related health services research with Aboriginal and Torres Strait Islander perspectives: Phase 1	Literature review – does not involve patient recruitment

## Research Publications

### Authors

Investigator	ORCID ID	Investigator	ORCID ID
Michael Schuetz	<a href="https://orcid.org/0000-0003-2808-0631">https://orcid.org/0000-0003-2808-0631</a>	Shahera Banu	<a href="https://orcid.org/0000-0001-5606-9670">https://orcid.org/0000-0001-5606-9670</a>
Jeffrey Lipman	<a href="https://orcid.org/0000-0002-5965-9876">https://orcid.org/0000-0002-5965-9876</a>	Beat Schmutz	<a href="https://orcid.org/0000-0002-2362-5762">https://orcid.org/0000-0002-2362-5762</a>
Kirsten Vallmuur	<a href="https://orcid.org/0000-0002-3760-0822">https://orcid.org/0000-0002-3760-0822</a>	Tanya Smyth	<a href="https://orcid.org/0000-0002-0096-6716">https://orcid.org/0000-0002-0096-6716</a>
Cate Cameron	<a href="https://orcid.org/0000-0003-1476-5744">https://orcid.org/0000-0003-1476-5744</a>	Panos Barlas	<a href="https://orcid.org/0000-0002-4734-4236">https://orcid.org/0000-0002-4734-4236</a>
Jacelle Warren	<a href="https://orcid.org/0000-0002-2273-1846">https://orcid.org/0000-0002-2273-1846</a>	Anthony Lynham	<a href="https://orcid.org/0000-0003-2255-2335">https://orcid.org/0000-0003-2255-2335</a>
Silvia Manzanero	<a href="https://orcid.org/0000-0002-5294-7082">https://orcid.org/0000-0002-5294-7082</a>	Susanna Cramb	<a href="https://orcid.org/0000-0001-9041-9531">https://orcid.org/0000-0001-9041-9531</a>
Arpita Das	<a href="https://orcid.org/0000-0002-1065-4660">https://orcid.org/0000-0002-1065-4660</a>	Brett Droder	<a href="https://orcid.org/0000-0003-0028-0447">https://orcid.org/0000-0003-0028-0447</a>
Esther Jacobson	<a href="https://orcid.org/0000-0003-3495-7487">https://orcid.org/0000-0003-3495-7487</a>	Clifford Afoakwah	<a href="https://orcid.org/0000-0002-8551-3651">https://orcid.org/0000-0002-8551-3651</a>
Frances Williamson	<a href="https://orcid.org/0000-0002-5476-1791">https://orcid.org/0000-0002-5476-1791</a>	Jesani Catchpoole	<a href="https://orcid.org/0000-0002-8933-5573">https://orcid.org/0000-0002-8933-5573</a>
Alejandro Melendez-Calderon	<a href="https://orcid.org/0000-0002-7922-1345">https://orcid.org/0000-0002-7922-1345</a>	Genevieve Westacott	<a href="https://orcid.org/0000-0002-4043-858X">https://orcid.org/0000-0002-4043-858X</a>

### Publications in 2024

#### Journal Articles (RBWH staff or consumers in bold)

Abdul-Aziz MH, Hammond NE, Brett SJ, Cotta MO, De Waele JJ, Devaux A, Di Tanna GL, **Dulhunty JM**, Elkady H, Eriksson L, Shahnaz Hasan M, Bibi Khan A, **Lipman J**, Liu X, Monti G, Myburgh J, Novy E, Omar S, Rajbhandari D, Roger C, Sjövall F, Zaghi I, Zangrillo A, Delaney A, **Roberts JA**. Prolonged vs Intermittent Infusions of beta-Lactam Antibiotics in Adults With Sepsis or Septic Shock: A Systematic Review and Meta-Analysis. *JAMA*. 2024;332(8):638-648. <https://doi.org/10.1001/jama.2024.9803>

Abdul-Aziz MH, Dulhunty JM, Rajbhandari D, Roberts JA, **Lipman J**. Is it time to implement prolonged infusions of beta-lactam antibiotics in and beyond critical care settings? *Intern Med J*. 2024;54(12):1931-1934. <https://doi.org/10.1111/imj.16584>

Borg DN, Impellizzeri FM, **Borg SJ**, Hutchins KP, Stewart IB, Jones T, Baguley BJ, et al. Meta-analysis prediction intervals are under reported in sport and exercise medicine. *Scand J Med Sci Sports*. 2024;34(3): e14603. <https://doi.org/10.1111/sms.14603>

**Borg SJ**, **Cameron CM**, Luetsch K, **Rolley A**, Geraghty T, McPhail S, McCreanor V. Prevalence of opioid use in adults with spinal cord injury: A systematic review and meta-analysis. *J Spinal Cord Med*. 2024;1-19. <https://doi.org/10.1080/10790268.2024.2319384>

**Bredy TM**, Glasgow C, Liddle J, Colwell S, Holding J, Swan S, and Patterson F. Considering occupational performance during recovery of distal radius fracture: A scoping review. *Aust Occup Ther J*. 2024;1-35. <https://doi.org/10.1111/1440-1630.12965>

Byrnes J, Vale MJ, **Afoakwah C**, Grant P, and Barnard S. Coaching people with cardiovascular disease to close their 'treatment gaps' reduces hospital utilization, saves lives, and delivers net cost savings over 10 years. *AJM Open*. 2024;100075. <https://doi.org/10.1016/j.ajmo.2024.100075>

**Cameron CM**, Shibl R, **Cramb S**, McCreanor V, Proper M, **Warren J**, Smyth T, Carter HE, **Vallmuur K**, et al. Community Opioid Dispensing after Injury (CODI): Cohort characteristics and opioid dispensing patterns. *Injury*. 2024;55(3): p.111216. <https://doi.org/10.1016/j.injury.2023.111216>

Chai GG, Tu Q, Cotta MO, Bauer MJ, Balch R, Okafor C, Comans T, Kruger P, Meyer J, Shekar K, Brady K, **Fourie C**, Sharp N, Vlad L, Whitley D, Ungerer JPJ, McWhinney BC, Farkas A, Paterson DL, Clark JE, **Hajkiewicz K**, Raman S, Bialasiewicz S, **Lipman J**, Forde BM, Harris PNA, Schlapbach LJ, Coin L, **Roberts JA**, Irwin AD. Achievement of therapeutic antibiotic exposures using Bayesian dosing software in critically unwell children and adults with sepsis. *Intensive Care Med*. 2024;50:539–547. <https://doi.org/10.1007/s00134-024-07353-3>

Choong E, Jurat D, Sandeep B, **Rainnie B**, **Manzanero S**, Dowsey M, McPhail S, Choong PFM, Wood F. The impact of infection on length of stay in adult burns: A scoping review. *Burns*. 2024;50(4):797-807. <https://doi.org/10.1016/j.burns.2024.01.003>

Dejonckheere M, Antonelli M, Arvaniti K, Blot K, CreaghBrown B, de Lange DW, De Waele J, et al. (inc. **Lipman J**). Epidemiology and risk factors for mortality in critically ill patients with pancreatic infection. *J Intensive Med*. 2024;4(1):81-93. <https://doi.org/10.1016/j.jointm.2023.06.004>

**Dhanani JA**, Shekar K, Parmar D, **Lipman J**, **Bristow D**, Wallis SC, Won H, Chandra S, Abdul-Aziz MH, **Roberts J**. COVID-19 Drug Treatments Are Prone to Sequestration in Extracorporeal Membrane Oxygenation Circuits: An Ex Vivo Extracorporeal Membrane Oxygenation Study. *ASAIO J*. 2024;70(6):546-552. <https://doi.org/10.1097/MAT.0000000000002120>

## Journal Articles (RBWH staff or consumers in bold)

Dorofaeff T, Valero YG, Coulthard MG, Wallis SC, Chatfield MD, Lister P, **Lipman J**, et al. Can capillary microsampling facilitate a clinical pharmacokinetics study of cefazolin in critically ill children? *Bioanalysis*. 2024;16(16):873-881. <https://doi.org/10.1080/17576180.2024.2377912>

Druery M, **Das A**, **Warren J**, Newcombe PA, **Lipman J**, and **Cameron CM**. Early predictors of health-related quality of life outcomes at 12 months post-burn: ABLE study. *Injury*. 2024;55(6):111545. <https://doi.org/10.1016/j.injury.2024.111545>

Druery M, **Das A**, **Warren J**, Newcombe PA, **Lipman J**, and **Cameron CM**. The 'AfterBurn' Longitudinal Exploratory (ABLE) study: Cohort profile. *Injury*. 2024;55(12):111908. <https://doi.org/10.1016/j.injury.2024.111908>

**Duff M**, **Manzanero S**, **Barker R**, **Barlas P**, **Westacott G**, **Lisec C**. Lithium-ion battery related burns and emerging trends: a retrospective case series and data analysis of emergency presentations. *ANZ J Surg*. 2024;94(11):1983-1989. <https://doi.org/10.1111/ans.19218>

**Dulhunty JM**, Brett SJ, De Waele JJ, Rajbhandari D, Billot L, Cotta MO, Davis JS, Finfer S, Hammond NE, Knowles S, Liu X, McGuinness S, Mysore J, Paterson DL, Peake S, Rhodes A, **Roberts JA**, Roger C, Shirwadkar C, **Starr T**, Taylor C, Myburgh JA, **Lipman J**; for the BLING III Study Investigators. Continuous vs Intermittent beta-Lactam Antibiotic Infusions in Critically Ill Patients With Sepsis: The BLING III Randomized Clinical Trial. *JAMA*. 2024;332(8):629-637. <https://doi.org/10.1001/jama.2024.9779>

Dulhunty JM, Roberts JA, **Lipman J**, BLING III Study Investigators. Continuous vs Intermittent  $\beta$ -Lactam Antibiotic Infusions for Sepsis-Reply. *JAMA*. 2024;333(2):174-175. <https://doi.org/10.1001/jama.2024.23275>

Flaws D, Fraser JF, **Laupland K**, Lavana J, Patterson S, Tabah A, Tronstad O, and Ramanan M. Time in ICU and post-intensive care syndrome: how long is long enough? *Crit Care*. 2024. 28(1):34. <https://doi.org/10.1186/s13054-024-04812-7>

Gomersall ELM, Ling L, Reinhart K, Bion V, Ekesh A, Adu-Takyi C, Azevedo LCP, et al. (inc. **Lipman J**). Core sepsis-related competencies for medical students: an international consensus by Delphi technique. *BMC Med Educ*. 2024;24:653. <https://doi.org/10.1186/s12909-024-05525-9>

Griffin BR, Trenoweth K, Dimanopoulos TA, De Young AC, Cobham VE, Williams H, and Kimble R. Co-design of a paediatric post-trauma electronic psychosocial screen. *J Pediatr Nurs*. 2024;76:52-60.

Gurung R, Terrill A, White G, Windolf M, Hofmann-Fliri L, Dlaska C, **Schuetz M**, Epari DR. Severity of Complications after Locking Plate Osteosynthesis in Distal Femur Fractures. *J Clin Med*. 2024;13(5):1492. <https://doi.org/10.3390/jcm13051492>

Harris PNA, Bauer MJ, Lüftinger L, Beisken S, Forde BM, Balch R, Cotta M, Schlapbach L, Raman S, Shekar K, Kruger P, **Lipman J**, Bialasiewicz S, Coin L, **Roberts JA**, Paterson DL, Irwin AD. Rapid nanopore sequencing and predictive susceptibility testing of positive blood cultures from intensive care patients with sepsis. *Microbiol Spectr*. 2024;12(2):e0306523. <https://doi.org/10.1128/spectrum.03065-23>

Helset E, Cheng V, Sporseem H, Thorstensen C, Nordøy I, Gammelsrud KW, Hanssen G, et al. (inc. **Lipman J**). Meropenem pharmacokinetic/pharmacodynamic target attainment and clinical response in ICU patients: A prospective observational study. *Acta Anaesthesiol Scand*. 2024;68(4):502-511. <https://doi.org/10.1111/aas.14376>

**Herath B**, Laubach M, Suresh S, **Schmutz B**, Little JP, Yarlagadda PKDV, Delbrück H, et al. Modular design workflow for 3D printable bioresorbable patient-specific bone scaffolds: extended features and clinical validation. *Front Bioeng Biotechnol*. 2024;12:1404481 <https://doi.org/10.3389/fbioe.2024.1404481>

**Holscher C**, **Manzanero S**, Hume A, **Foster AL**, **Tetsworth K**, and **Chapman PR**. Non-tuberculous mycobacterial bone and joint infections - a case series from a tertiary referral centre in Australia. *ANZ J Surg*. 2024;94(11):1942-1948. <https://doi.org/10.1111/ans.19268>

Kong D, **Roberts JA**, **Lipman J**, Taccone FS, Cohen-Wolkowicz M, et al, PIP/TAZ Consortium. A Pooled Pharmacokinetic Analysis for Piperacillin/Tazobactam Across Different Patient Populations: From Premature Infants to the Elderly. *Clin Pharmacokinet*. 2024. PMID: 39722108. <https://doi.org/10.1007/s40262-024-01460-6>

Koomson I, Lenzen S, **Afoakwah C**. Informal care and financial stress: Longitudinal evidence from Australia. *Stress Health*. 2024:e3393. <https://doi.org/10.1002/smi.3393>

Koomson I, **Afoakwah C**, and Twumasi MA. Racial diversity, child stunting and underweight: Policies design and promotion in South Africa. *J Policy Model*. 2024;46(6):1243-1262. <https://doi.org/10.1016/j.jpolmod.2024.05.009>

Kumta N, Heffernan AJ, Cotta MO, Liu X, Parker S, Wallis S, Livermore A, Starr T, Wong WT, Joynt GM, **Lipman J**, Roberts JA. Population pharmacokinetics of piperacillin-tazobactam in the plasma and cerebrospinal fluid of critically ill patients. *Antimicrob Agents Chemother*. 2024:e0060124. <https://doi.org/10.1128/aac.00601-24>

Kunisch F, Campobasso C, Wagemans J, Yildirim S, Chan BK, Schaudinn C, et al. (inc. **Trampuz A**). Targeting *Pseudomonas aeruginosa* biofilm with an evolutionary trained bacteriophage cocktail exploiting phage resistance trade-offs. *Nat Commun*. 2024;15(1):8572. <https://doi.org/10.1038/s41467-024-52595-w>

Laubach M, **Herath B**, Suresh S, Saifzadeh S, Dargaville BL, Cometta S, Schemenz V, et al. An innovative intramedullary bone graft harvesting concept as a fundamental component of scaffold-guided bone regeneration: A preclinical in vivo validation. *J Orthop. Translat*. 2024;47:1-14. <https://doi.org/10.1016/j.jot.2024.05.002>



## Journal Articles (RBWH staff or consumers in bold)

Loidice A, Bailly S, Ruckly S, Buetti N, Barbier F, Staiguly Q, Tabah A, Timsit JF, et al. (inc. **Lipman J**). Effect of adequacy of empirical antibiotic therapy for hospital-acquired bloodstream infections on intensive care unit patient prognosis: a causal inference approach using data from the Euroact2 study. *Clin Microbiol Infect*. 2024;30(12):1559-1568. <https://doi.org/10.1016/j.cmi.2024.09.011>

Lyons RA, Gabbe BJ, and **Vallmuur K**. Potential for advances in data linkage and data science to support injury prevention research. *Inj Prev*. 2024;30:442-445. <https://doi.org/10.1136/ip-2024-045367>

MacKechie MC, Shearer DW, Verhofstad MHJ, Martin C, Graham SM, Pesantez R, **Schuetz M**, et al. Establishing consensus on essential resources for musculoskeletal trauma care worldwide: A modified Delphi study. *J Bone Jt Surg*. 2024;106(1):47-55. <https://doi.org/10.2106/jbjs.23.00387>

Margalit I, Yahav D, Hoffman T, Tabah A, Ruckly S, Barbier F, Singer P, Timsit JF, Prendki V, Buetti N, et al. (inc. **Lipman J**). Presentation, management, and outcomes of older compared to younger adults with hospital-acquired bloodstream infections in the intensive care unit: a multicenter cohort study. *Infection*. 2024;52(6):2435-2443. <https://doi.org/10.1007/s15010-024-02304-y>

**McLeod K, Owens L, Williamson F, Faulkner B, McLanders M**. Queensland Trauma Education (QTE): an innovative simulation program that addresses the needs and barriers of interprofessional trauma care education across a complex landscape. *Rural Remote Health*. 2024;24(2):8851. <https://doi.org/10.22605/RRH8851>

Noye N, **Steadman W**, Whittaker B, Cacioli P, and Wall C. Does exposure to polymethyl methacrylate bone cement increase the risk of surgical glove failure? *ANZ J Surg*. 2024;94(4):724-732. <https://doi.org/10.1111/ans.18927>

**O'Leary S, Heine J, Warren J, Smyth T**, Ballard E, **Mitchell G**, See W, **Barlas P**, Machado GC, **Cottrell M**, Comans T, Foster NE. Reinforcing informed medication prescription for low back pain in the emergency department (RIME): a controlled interrupted time series implementation study protocol. *BMJ Open*. 2024;14(3):e082668. <https://doi.org/10.1136/bmjopen-2023-082668>

Peters N, **Williamson F**, and Eley V. Ultrasound transducer disinfection for percutaneous procedures: A review of the evidence supporting guideline recommendations. *Australas J Ultrasound Med*. 2024;27(4):242-250. <https://doi.org/10.1002/ajum.12408>

Powell B, **Cramb S**. The shock index predicts in-flight blood transfusion in aeromedical trauma patients. *Emerg Med Australas*. 2024;36(5):676-680. <https://doi.org/10.1111/1742-6723.14413>

Powell B and **Cramb S**. Trauma predictive scores show limited utility for predicting in-flight deterioration in aeromedical patients. *Air Medical Journal*. 2024;43(6):528-534. <https://doi.org/10.1016/j.amj.2024.09.002>

**Santomauro C, McLanders M**, Rae A. Experiences of rural clinicians accessing specialist support via telehealth for trauma and emergency care in Queensland, Australia. *Digit Health*. 2024;10. <https://doi.org/10.1177/20552076241251950>

Taraporewalla K, Barach P, **Lipman J**, and Van Zundert A. The Efficiency of the Constraint-Led Approach in Teaching External Chest Compressions to Medical Students. *Universal Library Med Health Sci*. 2024;2(1). [https://www.ulopenaccess.com/ulpages/fulltextULMHS?PublishID=ULMHS20240201\\_009](https://www.ulopenaccess.com/ulpages/fulltextULMHS?PublishID=ULMHS20240201_009)

Taraporewalla K, Barach P, **Lipman J**, and Van Zundert A. The Effectiveness of the Constraint-Led Approach in Developing Medical Procedural Skills. *Universal Library Med Health Sci*. 2024;2(2):11-18. [https://www.ulopenaccess.com/ulpages/fulltextUlmhs?PublishID=ULMHS20240202\\_003](https://www.ulopenaccess.com/ulpages/fulltextUlmhs?PublishID=ULMHS20240202_003)

Tran C, Nunez C, Eslick GD, **Barker R**, and Elliott EJ. Button battery exposure in children: a systematic review and meta-analysis. *Inj Prev*. 2024;ip-2024-045339. <https://doi.org/10.1136/ip-2024-045339>

Tran C, Nunez C, Eslick GD, **Barker R**, and Elliott EJ. Complications of button battery ingestion or insertion in children: a systematic review and pooled analysis of individual patient-level data. *World J Pediatr*. 2024;20(10):1017-1028. <https://doi.org/10.1007/s12519-024-00833-y>

**Watson N, Droder B, Mitchell G**, and Hacking C. Head, face and neck injury patterns for electric scooter accidents identified on computed tomography scanning: Does legislative change enforcing safer riding practices have an impact on morbidity for significant head, face and neck trauma? *J Med Imaging Radiat Oncol*. 2024;68(7):796-804. <https://doi.org/10.1111/1754-9485.13788>

**Williamson F** and Cole E. Trauma team activation for older patients with pelvic fractures: Are current criteria adequate? *Emerg Med Australas*. 2024;36(6):907-914. <https://doi.org/10.1111/1742-6723.14472>

**Williamson F**, Proper M, Shib R, **Cramb S**, McCreanor V, **Warren J**, and **Cameron C**. Community opioid dispensing after rib fracture injuries: CODI study. *Br J Pain*. 2024;55(3):111216. <https://doi.org/10.1016/j.injury.2023.111216>

Xu H, Corley A, Young ER, Doubrovsky A, Ware RS, **Afoakwah C**, Wang C, et al. Long guidewire peripheral intravenous catheters in emergency departments for management of difficult intravenous access: A multicenter, pragmatic, randomized controlled trial. *Acad Emerg Med*. 2024;31(12):1223-1232. <https://doi.org/10.1111/acem.15004>



## Keynote or Plenary Lectures given in 2024

Date	Title
12 Jun 2024	<b>Lipman J.</b> BLING III trial results session. in Critical Care Reviews Meeting 2024. Belfast, Ireland. Plenary lecture.
27 Jun 2024	<b>Niven C.</b> Buying in Australia – Are We Safe? ACCC 2024 National Consumer Congress. Sydney. Invited panellist.
7 Oct 2024	<b>Lipman J.</b> BLING-III trial. in European Society of Intensive Care Medicine 37th Annual Conference. Barcelona. Plenary lecture.
25 Oct 2024	<b>Williamson F</b> , Proper M, Shibl R, <b>Cramb S</b> , McCreanor V, <b>Warren J</b> , and <b>Cameron CM</b> . Community opioid dispensing after rib fracture injuries: CODI study. Australian & New Zealand Trauma Society (ANZTS) Annual Scientific Meeting, Trauma 2024 Conference. Brisbane. <b>Winner of Best Medical Presentation</b>
26 Oct 2024	<b>Schuetz M.</b> Multidisciplinary Device Related Infection Team (mDRIFT), (Plenary Speaker). Australian & New Zealand Trauma Society (ANZTS) Annual Scientific Meeting, Trauma 2024 Conference. Brisbane. 26 Oct 2024. Plenary lecture